

PART I : GENERAL INTELLIGENCE AND REASONING

Directions : In questions no. 1 to 9, select the related word/letters/number from the given alternatives.

1. Prediction : Future :: Regret : ?
 (A) Past (B) Present
 (C) Sin (D) Time
2. Adversary : Enemy :: Adversity : ?
 (A) Friend (B) Dynamic
 (C) Love (D) Difficulty
3. Bird : Worm :: ?
 (A) Horse : Stable
 (B) Trap : Cheese
 (C) Lion : Cave
 (D) Cat : Mouse
4. MAD : JXA :: RUN : ?
 (A) OSQ (B) PRJ
 (C) UXQ (D) ORK
5. BEGK : ADFJ :: PSVY : ?
 (A) ORUX (B) ROUX
 (C) LQUT (D) LOQT
6. AZBY : CXDW :: EVFU : ?
 (A) GHTS (B) TGSH
 (C) GTHS (D) GSTH
7. 42 : 20 :: 64 : ?
 (A) 31 (B) 32
 (C) 33 (D) 34
8. 6 : 18 :: 4 : ?
 (A) 6 (B) 8
 (C) 10 (D) 14
9. 8 : 24 :: ? : 32
 (A) 5 (B) 6
 (C) 10 (D) 8

Directions : In questions no. 10 to 18, find the odd word/letters/number/number pair from the given alternatives.

10. (A) Tired (B) Tardy
 (C) Slow (D) Late
11. (A) Agitation (B) Confusion
 (C) Commotion (D) Annihilation
12. (A) Pen : Stationery (B) Earth : Moon
 (C) Sun : Star (D) Painter : Artist
13. (A) EDC (B) MLK
 (C) NPR (D) XWV
14. (A) MOQS (B) ZADE
 (C) CEGI (D) SUWY
15. (A) NILE (B) LIEN
 (C) LINE (D) LEAN
16. (A) 78 (B) 91
 (C) 84 (D) 26
17. (A) 48 (B) 96
 (C) 59 (D) 12
18. (A) 16 - 32 (B) 19 - 38
 (C) 21 - 40 (D) 23 - 46
19. Which one of the given responses would be a meaningful order of the following words in ascending order ?
 1. Probation
 2. Interview
 3. Selection
 4. Appointment
 5. Advertisement
 (A) 5, 2, 3, 4, 1 (B) 5, 3, 2, 1, 4
 (C) 5, 4, 2, 3, 1 (D) 4, 5, 1, 2, 3

20. Arrange the words given below in a meaningful sequence :

1. Printer
2. Publisher
3. Writer
4. Editor
5. Seller

- (A) 2, 3, 4, 1, 5 (B) 3, 4, 2, 1, 5
(C) 3, 4, 1, 2, 5 (D) 2, 4, 3, 5, 1

21. Which of the following words will come fourth if arranged according to the English dictionary ?

- (A) Rain (B) Reef
(C) Ready (D) Rainbow

Directions : In questions no. 22 to 26, a series is given, with one term missing. Choose the correct alternative from the given ones that will complete the series.

22. ACE, GIK, MOQ, ?

- (A) RTU (B) SUW
(C) UVW (D) STV

23. LMnP, PQrT, TUvX, ?

- (A) VWnP (B) PRsT
(C) UVwY (D) XYzB

24. 826, 480, 346, 134, ?

- (A) 83 (B) 61
(C) 212 (D) 126

25. 78, 155, 309, ?, 1233

- (A) 625 (B) 1230
(C) 1000 (D) 617

26. 5, 8, 16, 19, 38, 41, ?

- (A) 44 (B) 80
(C) 40 (D) 82

27. Which one set of letters when sequentially placed at the gaps in the given letter series shall complete it ?

h _ t _ l _ tt _ lht _ m _ htt _ l

- (A) mmhtltm (B) hmmttltm
(C) tmhmtltm (D) lmtmhmt

28. A and B are a married couple. C and D are brothers. C is the brother of A. How is D related to B ?

- (A) Brother-in-law (B) Brother
(C) Son-in-law (D) Cousin

29. The average age of the present ages of Amit and Anil is 32 years. If Amit is 6 years older than Anil, what is Anil's present age ?

- (A) 29 years (B) 38 years
(C) 26 years (D) 19 years

30. From the given alternatives, select the word which **cannot** be formed using the letters of the given word.

JURISPRUDENCE

- (A) PREJUDICE (B) PRINCE
(C) PRUNE (D) PRESIDENT

31. From the given alternative words, select the word which can be formed using the letters of the given word.

MONUMENT

- (A) TENENT (B) TENT
(C) MOUNT (D) MOVEMENT

32. If in a certain code, DIAGRAM is written as AFXDOXJ, then how can PICTURE be written in that code ?

- (A) NGARSPC (B) MGAQRPB
(C) NFYQROC (D) MFZQROB

33. If ABLE is written as 5324 and BINGO is written as 36178, then BANGLE can be written as

- (A) 351724 (B) 356724
(C) 321846 (D) 362417

34. If '+' stands for division; 'x' stands for addition; '-' stands for multiplication; '÷' stands for subtraction, then which of the following equations is correct?

(A) $33 - 4 \div 5 \times 6 + 2 = 130$
 (B) $33 \times 4 - 5 + 6 \div 2 = 26$
 (C) $33 \div 4 \times 5 + 6 - 2 = 30$
 (D) $33 - 4 + 5 \div 6 \times 2 = 24$

35. Sonu and his friend Rahul went for shopping. Sonu had ₹ 500 with him while Rahul had ₹ 240. Sonu spent twice as much as Rahul on shopping. Now Sonu has three times as much money as is left with Rahul. How much money did Sonu spend?

(A) ₹ 220 (B) ₹ 60
 (C) ₹ 440 (D) ₹ 120

36. Which one of the following interchanges of signs would make the given equation correct?

$$5 + 3 \times 8 - 12 \div 4 = 3$$

(A) + and - (B) - and ÷
 (C) + and × (D) + and ÷

37. Some equations have been solved on the basis of a certain system. Find the correct answer for the unsolved equation on that basis.

$$\text{If } 29 \times 13 = 14, 76 \times 26 = 34, \text{ then } 64 \times 14 = ?$$

(A) 54 (B) 39
 (C) 32 (D) 26

Directions : In questions no. 38 and 39, select the missing number from the given responses.

38.	121	100	?	169
	4	8	9	7
	7	2	5	6

(A) 81 (B) 114
 (C) 196 (D) 214

39.	1	4	9	16
	1	2	3	4
	2	4	6	?

(A) 8 (B) 7
 (C) 5 (D) 4

40. A girl leaves from her home. She first walks 30 m in North-West direction and then 30 m in South-West direction. Next, she walks 30 m in South-East direction. Finally, she turns towards her house. In which direction is she moving?

(A) North-East
 (B) North-West
 (C) South-East
 (D) South-West

41. Starting from a point O, Mahesh walks a distance of 5 km South, then turns to his right and walks 3 km. From there he again turns right and walks 5 km. He then turns to his left and walks 5 km. How far is he from the starting point?

(A) 15 km (B) 13 km
 (C) 8 km (D) 5 km

Directions : In questions no. 42 and 43, two statements are given followed by two/four conclusions I, II, III and IV. You have to consider the statements to be true, even if they seem to be at variance from commonly known facts. You have to decide which of the given conclusions can definitely be drawn from the given statements. Indicate your answer.

42. **Statements :**

- All apples are oranges.
- Some oranges are papayas.

Conclusions :

- Some apples are papayas.
- Some papayas are apples.

(A) Only conclusion I follows
 (B) Only conclusion II follows
 (C) Both conclusions I and II follow
 (D) Neither conclusion I nor II follows

43. Statements :

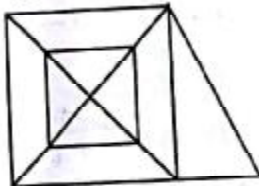
1. All aeroplanes are trains.
2. Some trains are chairs.

Conclusions :

- I. Some aeroplanes are chairs.
- II. Some chairs are aeroplanes.
- III. Some chairs are trains.
- IV. Some trains are aeroplanes.

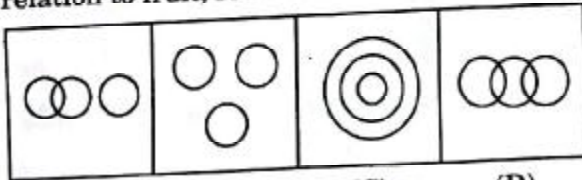
- (A) None follows
- (B) Only conclusions I and II follow
- (C) Only conclusions II and III follow
- (D) Only conclusions III and IV follow

- 44. How many triangles are there in the following figure ?**



- (A) 16
- (B) 18
- (C) 20
- (D) 22

- 45. Which of the following figures give the proper relation to fruit, red and shirt ?**



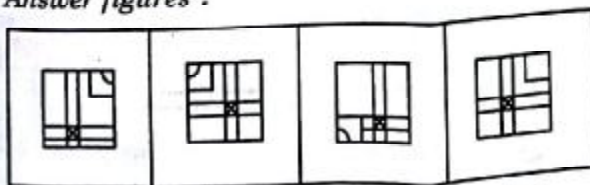
- (A)
- (B)
- (C)
- (D)

- 46. Which answer figure will complete the pattern in the question figure ?**

Question figure :



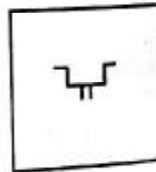
Answer figures :



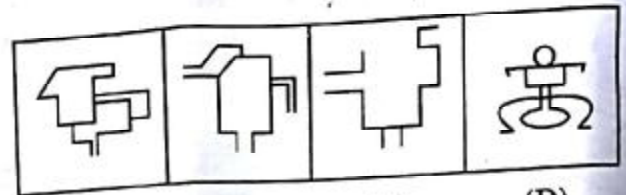
- (A)
- (B)
- (C)
- (D)

- 47. From the given answer figures, select the one in which the question figure is hidden/embedded.**

Question figure :



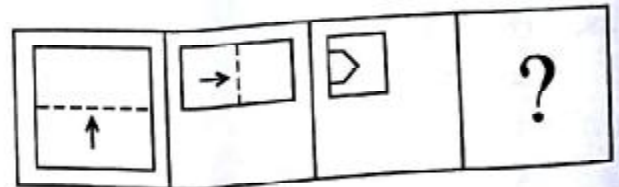
Answer figures :



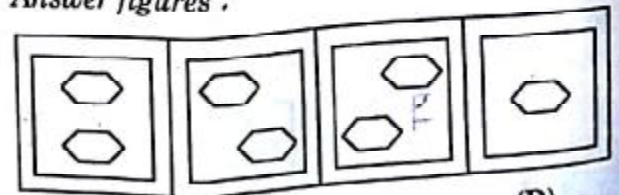
- (A)
- (B)
- (C)
- (D)

- 48. A piece of paper is folded and cut as shown below in the question figures. From the given answer figures, indicate how it will appear when opened.**

Question figures :



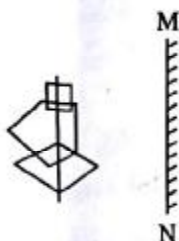
Answer figures :



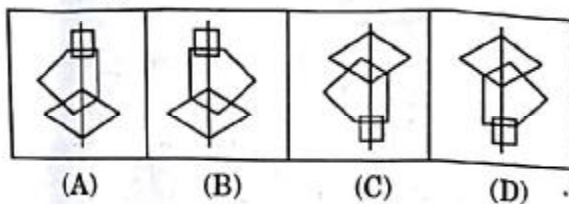
- (A)
- (B)
- (C)
- (D)

49. If a mirror is placed on the line MN, then which of the answer figures is the right image of the question figure?

Question figure :



Answer figures :



50. A word is represented by only one set of numbers as given in any one of the alternatives. The sets of numbers given in the alternatives are represented by two classes of alphabets as in the two matrices given below. The columns and rows of Matrix I are numbered from 0 to 4 and that of Matrix II are numbered from 5 to 9. A letter from these matrices can be represented first by its row and next by its column, e.g., 'O' can be represented by 01, 33, etc., and 'Q' can be represented by 55, 78, etc. Similarly, you have to identify the set for the word 'METAL'.

Matrix I

	0	1	2	3	4
0	M	O	R	A	L
1	O	R	A	L	M
2	R	A	L	M	O
3	A	L	M	O	R
4	L	M	O	R	A

Matrix II

	5	6	7	8	9
5	Q	U	I	E	T
6	U	I	E	T	Q
7	I	E	T	Q	U
8	E	T	Q	U	I
9	T	Q	U	I	E

- (A) 23, 67, 96, 40, 44
(B) 23, 76, 95, 40, 44
(C) 32, 76, 95, 44, 04
(D) 32, 76, 44, 95, 04

FOR VISUALLY HANDICAPPED / CEREBRAL PALSY CANDIDATES ONLY

44. If $A = 26$, $SON = 33$, then $CAR = ?$
(A) 57 (B) 59
(C) 27 (D) 29
45. A, B, C and D are 4 friends. C is taller than D but shorter than B, who is taller than A. Who is the tallest?
(A) A (B) B
(C) C (D) D
46. 5 girls took part in a race. Reena finished before Mohini but behind Gauri. Ananya finished before Sanchi but behind Mohini. Who won the race?
(A) Reena (B) Gauri
(C) Mohini (D) Ananya
47. A lady introduced the girl coming with her as "she is the daughter of the mother of my husband's son". What relation did the girl bear to her?
(A) Daughter (B) Sister
(C) Cousin (D) Daughter-in-law
48. Nikhilesh ranks 18th in a class of 49 students. What is his rank from the last?
(A) 31 (B) 32
(C) 18 (D) 19
49. In a certain code language, '743' means 'mangoes are good'; '657' means 'eat good food' and '934' means 'mangoes are ripe'. Which digit means 'ripe' in that language?
(A) 9 (B) 7
(C) 5 (D) 4
50. The ratio of boys and girls in a class is 5 : 3. If there are 520 boys in the school, find the number of girls in that school.
(A) 170 (B) 311
(C) 312 (D) 866

PART 4: GENERAL AWARENESS

51. The supply-side measure to control inflation is
(A) Credit control
(B) Reducing public expenditure
(C) Price control through Public Distribution System
(D) Higher taxation to mop up liquidity
52. The Ability Principle of Taxation is given by
(A) J.S. Mill (B) Adam Smith
(C) Edgeworth (D) Joan Robinson
53. 'World Economic Report' is published by
(A) UNCTAD
(B) World Bank
(C) UNDP
(D) IMF
54. 'Gallop ing Inflation' is also known as
(A) Creeping Inflation
(B) Walking Inflation
(C) Running Inflation
(D) Hyper Inflation
55. Average Fixed Cost Curve is
(A) Downward sloping
(B) Upward sloping
(C) 'U' shaped
(D) 'V' shaped
56. Article 368 of the Indian Constitution deals with
(A) Amending Procedure
(B) Emergency Provisions
(C) Right to Primary Education
(D) Right to Information
57. Who among the following proposed the suggestion for a Constituent Assembly first in 1935 ?
(A) M.N. Roy (B) Nehru
(C) Gandhi (D) J.P. Narayan
58. According to Paul Appleby the quality of good administrators is
(A) Self-confidence (B) Intelligence
(C) Integrity (D) Loyalty
59. Which of the following works of Plato is primarily a 'treatise' on justice ?
(A) *Apology* (B) *Phaedo*
(C) *The Statesman* (D) *The Republic*
60. Who was referred to as the "Ambassador of Hindu-Muslim Unity" by Sarojini Naidu ?
(A) Maulana Azad
(B) Muhammad Ali Jinnah
(C) Abdul Ghaffar Khan
(D) Shaukat Ali
61. The capital of Yadava kings was
(A) Krishnagiri (B) Devagiri
(C) Varanasi (D) Kanchipuram
62. The fall of Bastille is associated with the
(A) Greek War of Independence
(B) Russian Revolution of November, 1917
(C) French Revolution of 1789
(D) American War of Independence
63. Which Governor General was called as the 'Father of Local Self-Government' in India ?
(A) Lord Ripon
(B) Lord Wellesley
(C) Lord Canning
(D) Lord William Bentinck
64. "The Three Emperors' League", 1873 was also known as
(A) The Dual Alliance
(B) Dreikaiserbund Treaty
(C) Triple Alliance
(D) Reinsurance Treaty
65. Panditraj Jagannath was the poet laureate of which of the following rulers ?
(A) Humayun (B) Akbar
(C) Shah Jahan (D) Aurangzeb
66. Which of the following is formed out of volcanic eruptions in India ?
(A) Himalayas
(B) Deccan Plateau
(C) Lakshadweep Islands
(D) Western Ghats

67. Terrigenous deposits are found in
 (A) Continental Shelf and Slope
 (B) Deep Sea Plain
 (C) Ocean Trenches
 (D) Rift Valley
68. Which of the following is the only volcanic peak in Antarctica?
 (A) Mt. Cook (B) Mt. Blanc
 (C) Mt. Erebus (D) Mt. Elbrus
69. Who laid the foundation of the 'School of Possibilism'?
 (A) Ratzel (B) Brunches
 (C) La Blache (D) Humboldt
70. The lysimeter helps in the estimation of
 (A) Wind direction
 (B) Evapotranspiration
 (C) Relative humidity
 (D) Vapour pressure
71. Compounds that are needed for enzymes to function properly are
 (A) Buffers (B) Steroids
 (C) Vitamins (D) Heavy metals
72. Heavy water is
 (A) Deuterium oxide
 (B) Deuterium
 (C) Rain water
 (D) Tritium oxide
73. Which one of the following is commonly known as 'Pond Silk'?
 (A) *Ulothrix* (B) *Spirogyra*
 (C) *Rhizopus* (D) Yeast
74. 'Gynecomastia' is
 (A) Development of breasts in males
 (B) Development of hair on ears in males
 (C) Increased height in females
 (D) Development of an extra finger in females
75. The highest concentration of urea is found in
 (A) Renal vein (B) Hepatic portal vein
 (C) Dorsal aorta (D) Hepatic vein
76. The inert gas which is substituted for nitrogen in the air used by deep sea divers for breathing, is
 (A) Helium (B) Xenon
 (C) Krypton (D) Argon
77. 'Cryogenics' is the study of
 (A) Low temperature (B) High temperature
 (C) Superconductor (D) Production of fuels
78. To prevent damage from lightning, lightning conductors are used on tall structures. The lightning conductor
 (A) should be made of a good conductor like copper with sharp-pointed edges
 (B) should be made of a good conductor but can be of any shape
 (C) should be in the form of a vertical rod
 (D) can be of any shape
79. Infrared radiations are detected by
 (A) Spectrometer
 (B) Pyrometer
 (C) Nanometer
 (D) Photometer
80. Beta rays emitted by a radioactive material are
 (A) Electromagnetic radiations
 (B) The electrons orbiting around the nucleus
 (C) Charged particles emitted by nucleus
 (D) Neutral particles
81. Which of the following computer memories is non-volatile?
 (A) RAM
 (B) DRAM
 (C) SRAM
 (D) ROM
82. In present day computing, which code is used and is accepted worldwide?
 (A) ISCH
 (B) ASCII
 (C) Hollerith Code
 (D) EBCDIC
83. Which of the following is the strongest base in aqueous solution?
 (A) Ethylamine (B) Diethylamine
 (C) Triethylamine (D) Ammonia

84. Which one of the following is *not* an artificial sweetener ?
 (A) Aspartame (B) Fructose
 (C) Saccharin (D) Sucralose
85. An acid having basicity one is
 (A) Phosphoric acid
 (B) Sodium dihydrogen phosphate
 (C) Disodium hydrogen phosphate
 (D) Sodium phosphate
86. Which one of the following vegetable oils is used in the manufacture of paints ?
 (A) Cottonseed oil
 (B) Palm oil
 (C) Sunflower oil
 (D) Linseed oil
87. Acid rain is caused by the pollution of environment by
 (A) Carbon dioxide and Nitrogen
 (B) Carbon monoxide and Carbon dioxide
 (C) Ozone and Carbon dioxide
 (D) Nitrous oxide and Sulphur dioxide
88. Which of the following is *not* a gaseous air pollutant ?
 (A) Oxides of sulphur
 (B) Oxides of nitrogen
 (C) Hydrocarbon
 (D) Smoke
89. Which of the following is called the 'land of one thousand lakes' ?
 (A) Finland (B) Sweden
 (C) Greenland (D) U.S.A.
90. The tree popularly known as 'Green Gold', but which is an ecological disaster, is
 (A) Eucalyptus (B) Banyan
 (C) Pipal (D) None of these
91. Garampani Sanctuary is located at
 (A) Junagarh, Gujarat
 (B) Diphu, Assam
 (C) Gangtok, Sikkim
 (D) Kohima, Nagaland
92. Who won the prestigious Gujar Mal Modi Award for Innovative Science and Technology for the year 2015 ?
 (A) Amalendu Krishna
 (B) Prof. Mustansir Barma
 (C) G.M. Reddy
 (D) Vivekanand Kain
93. 'Entomology' is the science that studies
 (A) Insects
 (B) Behaviour of human beings
 (C) Formation of rocks
 (D) None of these
94. Which country uses the 'Birr' as its currency ?
 (A) Estonia (B) Ethiopia
 (C) Togo (D) Eritrea
95. How many Nobel Prize Awards are awarded each year ?
 (A) 6 (B) 5
 (C) 7 (D) 4
96. Wellington Trophy is associated with
 (A) Bridge (B) Rowing
 (C) Chess (D) Hockey
97. World Autism Awareness Day is observed on
 (A) 1st April (B) 2nd April
 (C) 3rd April (D) 5th April
98. Who invented the 'World Wide Web' ?
 (A) Charles Babbage
 (B) Tim Berners-Lee
 (C) Martin Cooper
 (D) R. Samuel Tomlinson
99. The novel 'When the River Sleeps' is written by
 (A) Easterine Kire (B) Anuradha Roy
 (C) Vikram Seth (D) Shobhaa De
100. In which country did the world's first organised motor race occur ?
 (A) France (B) Germany
 (C) U.S.A. (D) Portugal

PART III : ENGLISH LANGUAGE AND COMPREHENSION

Directions : In questions no. 101 to 110, some parts of the sentences have errors and some are correct. Find out which part of a sentence has an error and blacken the circle (●) corresponding to the appropriate option. If a sentence is free from error, blacken the circle corresponding to "No Error" in the Answer Sheet.

101. I want to exchange / my Maruti / from a Santro. / No error.
(A) (B) (C) (D)
102. There were extensive / lawn in front / of the bungalow. / No error.
(A) (B) (C) (D)
103. Wise men follow nobel / ideas whereas fools / disregard them. / No error.
(A) (B) (C) (D)
104. The navel officers / successfully fought the pirates /
(A) (B)
who had looted and plundered for many years. / No error.
(C) (D)
105. He acted not / as per my advice / but somebody else. / No error.
(A) (B) (C) (D)
106. The chairs in the / room are in a / state disarray. / No error.
(A) (B) (C) (D)
107. Ashoka the Great was / regarded one of the greatest emperors /
(A) (B)
the world has ever produced. / No error.
(C) (D)
108. Will you please / give me little milk / for my cat ? / No error.
(A) (B) (C) (D)
109. The light bulbs / on the hall / need to be changed. / No error.
(A) (B) (C) (D)
110. A recent survey indicates / that the number of drug addicts / grew day by day. / No error.
(A) (B) (C) (D)

Directions : In questions no. 111 to 115, sentences are given with blanks to be filled in with an appropriate word(s). Four alternatives are suggested for each question. Choose the most appropriate alternative out of the four and indicate it in the Answer Sheet.

111. Do not look _____ on women.
 (A) up (B) down
 (C) right (D) left
112. I _____ him on this point.
 (A) agree to (B) agreeing with
 (C) agreed with (D) admitted to
113. The stranger _____ in through the window last night.
 (A) creeps (B) creep
 (C) crept (D) creeping
114. They _____ living here since 2000.
 (A) are still (B) have been
 (C) are (D) will be
115. The specialist _____ you want to meet is available only on Thursdays.
 (A) which (B) whom
 (C) whose (D) who

Directions : In questions no. 116 to 120, out of the four alternatives, choose the one which best expresses the meaning of the given word and mark it in the Answer Sheet.

116. Hesitate
 (A) Resolve (B) Determine
 (C) Pause (D) Settle
117. Consciousness
 (A) Vision (B) Understanding
 (C) Nothingness (D) Awareness

118. Caliber
 (A) Career (B) Capacity
 (C) Calmness (D) Crowd
119. Persuade
 (A) Deter (B) Hinder
 (C) Coax (D) Restrain
120. Wander
 (A) Race (B) Wrestle
 (C) Gallop (D) Roam

Directions : In questions no. 121 to 125, choose the word opposite in meaning to the given word and mark it in the Answer Sheet.

121. Virtue
 (A) Fool (B) Vice
 (C) Untrue (D) Defeat
122. Evasive
 (A) Categorical (B) Indefinite
 (C) Explicit (D) Unclear
123. Relentless
 (A) Gentle (B) Sensitive
 (C) Yielding (D) Kind
124. Hostility
 (A) Enmity (B) Friendship
 (C) Partnership (D) Relationship
125. Assent
 (A) Separation (B) Confusion
 (C) Dissent (D) Self-interest

Directions : In questions no. 126 to 130, four alternatives are given for the Idiom/Phrase underlined in the sentence. Choose the alternative which best expresses the meaning of the Idiom/Phrase and mark it in the Answer Sheet.

126. The teacher was taken aback by the student's remark.
 (A) annoyed (B) surprised
 (C) hurt (D) pleased