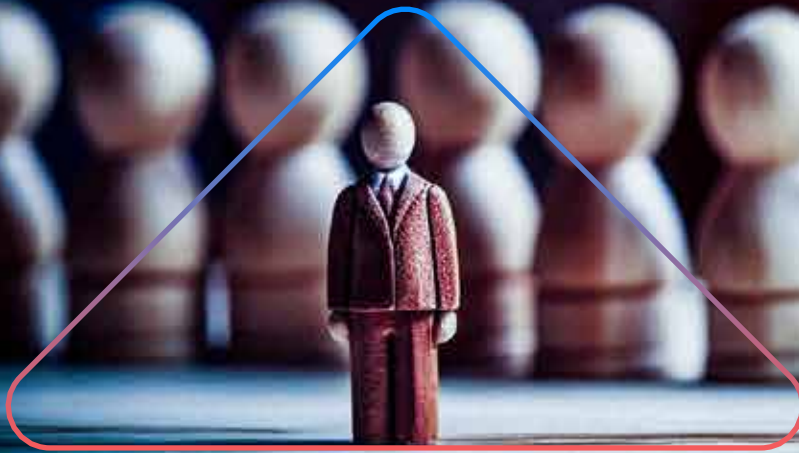




certification in **HR** management



about entri

Entri elevate is an immersive training program meticulously crafted to enhance your skill set and transform you into a job ready candidate. led by seasoned trainers, this program offers comprehensive guidance throughout your journey. with access to expert mentors from diverse top industries, entri elevate provides invaluable industry exposure that is essential for excelling in your chosen field. in addition to technical training, entri elevate includes soft skills sessions to help you master interpersonal and communication skills—qualities vital for thriving in today's competitive job market. whether it's interview preparation or building confidence in professional interactions, our holistic approach ensures you are well-equipped to succeed in your career. with entri elevate, you'll gain not only technical expertise but also the confidence to excel in every professional challenge

why choose the certification in hr management?

This course is designed for individuals who are passionate about building a career in Human Resources. Whether you're a graduate exploring career options or a professional seeking to transition into HR, this course equips you with the knowledge and skills necessary to excel in the HR field. From foundational concepts to advanced HR strategies, this program ensures you are job-ready for the evolving HR landscape. The Certification in HR Management covers all critical HR responsibilities, making it the best option for those aiming to secure their place in this rewarding profession. With practical assignments, expert-led sessions, and hands-on experience, you'll be empowered to take on HR challenges confidently



about the course

► Duration

- 4 months
- Weekly hour:- 9hrs
- Time needed to be spent per day by student:- 2 hrs

► Format

- Blended learning model
- (100 hours of recorded & live sessions)

interactive features



Assignments and assessments for each module



Communication-focused sessions covering resume building, interviews, and mock interviews



Expert-led industry sessions



Comprehensive placement assistance

This course is designed to make you employable in the HR sector by addressing the core and strategic functions of HR. Whether you're aspiring to enter the HR field or advance within it, this program ensures you are equipped with the tools and knowledge to succeed

job opportunities

Graduates of the Certification in HR Management are well-prepared for a variety of roles, such as:

- HR Generalist
- HR Executive
- HR Intern
- Talent Acquisition Specialist
- Payroll executive
- Employee Engagement Officer
- HR Analyst
- Learning and Development Specialist
- Compliance Manager
- HR Business Partner

curriculum

Module 1:

Foundational Modules

- Introduction to HR
 - HR Function Overview
 - HR's Role in Business
-

Module 2:

Core HR Functions

- Talent Acquisition
 - Onboarding & Offboarding Processes
 - HR Operations
 - Payroll Management
 - Employer Branding
 - HRIS Management
-

Module 3:

Compliance & Ethics

- Ethical Practice
- Labor Compliance
- PoSH in India

Module 4:

Employee Engagement & Development

- Relationship Management
 - Employee Engagement Strategies
 - Learning and Development
 - Talent Management
-

Module 5:

Performance & Organizational Development

- Performance Management
 - Organizational Development
 - Change Management
-

Module 6:

Strategic HR Skills

- Diversity, Equity & Inclusion
 - Leadership & Navigation
 - Critical Thinking
 - HR Analytics
 - Consultation
-

Module 7:

Specialized Skills

- Compensation & Benefits
- AI in HR



Module 8:

Business Alignment

- Business Acumen
 - Relationship with Other Departments
-

Module 9:

Future of HR

- Future of HR

certification

Upon successfully completing the course and all required assignments, learners will receive certifications from **Entri**, the **National Skill Development Corporation (NSDC)**, and **Illinois Institute of Technology (Illinois Tech)**. These certifications validate their expertise in **HR management**, demonstrating their proficiency in industry-relevant skills and enhancing their career prospects. The **NSDC certification** aligns with national skill development standards, improving employability, while the **Illinois Tech certification** provides global recognition, strengthening their credibility in the HR field. With these certifications, learners gain a competitive advantage, showcasing their readiness for diverse opportunities in human resource management





CERTIFICATE

This is to certify that

Ms./Mr. _____

Son/Daughter of **A P VASU** Student ID _____

has successfully completed the _____ Course

with Grade **A+** from **ENTRI SOFTWARE PRIVATE LIMITED**

Date of Issuance: 13th November 2024

Certificate ID: j2wk5k0i9419o6n



Issued by

CEO
Entri App
ENTRI SOFTWARE PRIVATE LIMITED

This is a System-generated Certificate. Assessment and Grading of the Candidate is provided/facilitated solely by the respective training provider based on its evaluation parameters.

**ILLINOIS
TECH**

CERTIFIED



CERTIFICATION IN HR MANAGEMENT

Issued by Illinois Institute of Technology

Certificate of Completion

This is to certify that

MOHAMMED HISAMUDDIN

has successfully completed the

ENTRI ELEVATE PROGRAM

on **entri app** in the month of **NOVEMBER 2024**

Hisam

Mohammed Hisamuddin
CEO & Co-Founder,
Entri app

RAJEEV

CA Rajeev Ramanath H
Course Advisor



Cert ID: 9IRWHR-VG2Y



Date: 20-11-2024



the entri way best practices

- Allocate at least 12 hours per week for learning and practice.
- Complete recorded sessions on time and actively participate in live sessions.
- Submit midweek tasks and module-end assignments promptly.
- Dedicate a distraction-free workspace for effective learning.
- Use a headset with a microphone and a webcam for live interactions

we are located at

1. Entri Hq

Maleppalli Road
Kakkanad, Thrikkakara
Ernakulam, Kerala - 682021

2. Entri Business Development Center

No. 32, 2nd Cross, Nanjappa Reddy Layout
Village, Opp. Ganga Sagar Hotel
Koramangala 8th Block, Koramangala
Bengaluru, Karnataka - 560095

3.D.no. 77-1, Vivekananda Rd

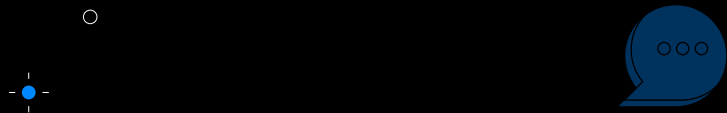
D.no. 77-1, Vivekananda Rd, Ram Nagar,
Coimbatore, Tamil Nadu-641018

4. B-87 Defence Colony

B-87 Defence Colony,
S-4, 2nd Floor, New Delhi-110024

5. Entri Inc

281 Summer St, Boston
Ma, 2nd Floor, Boston
Ma 02210 United States



thank you

