

Focus CGL 2026



<https://www.entri.me>



<https://play.google.com/store/apps/details?id=me.entri.entri.me>

1. Which Indian state recorded negative population growth between 2001-2011?

A Kerala

B Nagaland

C Sikkim

D Mizoram

Solution

- According to the Census of India 2011, Nagaland was the only state to record a negative population growth rate of -0.58% during the period 2001-2011.
- The negative growth rate was attributed to migration, as many people left Nagaland for better opportunities outside the state.
- Another contributing factor was an overestimation of the population in the 2001 Census, which led to a decrease in the reported population for 2011.
- The population of Nagaland decreased from 1,988,636 in 2001 to 1,978,502 in 2011, reflecting the negative growth rate.
- Such trends highlight demographic challenges in the northeastern region, including migration and socio-economic factors.

2. **Which Article of the Constitution empowers the President to establish an Inter-State Council?**

A Article 262

B Article 246

C Article 263

D Article 236

Solution

- Article 263 of the Constitution of India empowers the President to establish an Inter-State Council if it appears to him/her that such a council would be in public interest.
- The purpose of the Inter-State Council is to facilitate coordination and resolve disputes between states or between the Union and states.
- Article 263 lays down provisions for addressing matters of common interest between the states and between states and the Union government.
- The President can define the nature of duties, the organization, and the procedure of the Inter-State Council.

3. If **WRITE** is coded as **YTKVG**, how is **READ** coded?

A TGCF

B GTCF

C TCGF

D TGFC

Solution

- Logic: Alphabet position + 2
- Similarly, READ = ?

$$R + 2 = T$$

$$E + 2 = G$$

$$A + 2 = C$$

$$D + 2 = F$$

- Hence, the correct answer is "Option A."

4. Find the area of the sector of a circle of radius 7 cm with a central angle of 90° .

A 38.50 cm^2

B 35 cm^2

C 20.67 cm^2

D 28 cm^2

Solution

- Area of a sector of a circle = $\frac{\theta}{360} \pi r^2$, where θ is the central angle and r is the radius.

- Substitute 90 for θ and 7 for r in the formula $\frac{\theta}{360} \pi r^2$.

$$= \frac{90}{360} \times \frac{22}{7} \times 7^2 = 38.5 \text{ cm}^2$$

- Therefore, the area of the given sector is 38.56 cm^2 .

5. Consider the following statements about Gwalior Fort:

1. It is spread over a hilltop more than 2 km in length.
2. Its southern path features intricately carved rock-cut temples of Jain tirthankars.
3. The Caturbhuj Mandir within the fort is an example of a Vaisnavite shrine.

Which of the statements given above is/are correct?

A 1 and 2 only

B 2 and 3 only

C 1 and 3 only

D 1, 2 and 3

Solution

- The Gwalior Fort stands on a sandstone hill known as Gopachal Hill and extends for about 2.4 km in length, dominating the city of Gwalior in Madhya Pradesh.
- The southern slope of the fort is famous for the rock-cut Jain sculptures, depicting the 24 Tirthankaras — particularly the colossal statues of Adinatha, Mahavira, and Parshvanatha.
- The Chaturbhuj Temple (Caturbhuj Mandir) inside the fort is dedicated to Lord Vishnu (Vaishnavite deity).

6. Under India's updated State Action Plan on Climate Change (SAPCC) for 2025, which sector received the highest budgetary allocation for climate adaptation?

A Transport

B Urban Planning

C Agriculture and Water Resources

D Renewable Energy

Solution

- Under India's updated State Action Plan on Climate Change (SAPCC) for 2025, the highest budgetary allocation for climate adaptation is given to the Agriculture and Water Resources sector.
- Agriculture is highly vulnerable to climate change as it depends heavily on climatic conditions such as rainfall, temperature, and seasonal variations.
- Water resources management is critical in addressing climate adaptation challenges, such as droughts, floods, and water scarcity exacerbated by climate change.
- The allocation aims to enhance irrigation infrastructure, promote sustainable agricultural practices, and improve water conservation efforts to adapt to shifting climate patterns.

- This step aligns with India's National Action Plan on Climate Change (NAPCC), which emphasizes resource efficiency, climate resilience, and sustainable development in agriculture and water management.

7. **Fill in the blank: At the 1960 Rome Olympics, Milkha Singh set a national record in the 400m event by finishing fourth with a timing of _____, a record that remained until 1984.**

A 43.2 seconds

B 45.6 seconds

C 44.8 seconds

D 46.2 seconds

Solution

- Milkha Singh, also known as the "Flying Sikh," represented India in the 1960 Rome Olympics. He participated in the 400m race and achieved a remarkable feat.
- Milkha Singh set a national record in the 400m event by finishing fourth in the final race. His timing was 45.6 seconds, which was an extraordinary achievement during that era.
- Although he narrowly missed winning a medal (he finished fourth), his timing was the best by an Indian athlete in this category, and it remained unbeaten for 24 years, until 1984.

8. Where is the Dr. S. P. Mookerjee Swimming Stadium situated?

A Mumbai

B Bangalore

C New Delhi

D Chandigarh

Solution

- Dr. S. P. Mookerjee Swimming Stadium is situated in New Delhi, the capital city of India. This is the correct location of the stadium.
- The stadium was named after Dr. Syama Prasad Mookerjee, a prominent Indian politician and founder of the Bharatiya Jana Sangh.
- It was primarily constructed for the 2010 Commonwealth Games held in New Delhi. Hence, it has modern facilities that meet international standards for swimming competitions.
- The stadium is located at the Talkatora Indoor Stadium Complex, which is a well-known sports complex in New Delhi.

9. What is meant by the rate of natural increase of population?

A Birth rate multiplied by death rate

B Ratio of workers to total population

C Difference between birth rate and death rate

D Growth caused only by migration

Solution

- **Rate of Natural Increase:** The rate of natural increase refers to the growth rate of a population calculated as the difference between the birth rate and the death rate in a given population over a specific period.
- It is typically expressed as a percentage and does not account for migration or other external factors.
- The formula to calculate the rate of natural increase is: Rate of Natural Increase = Birth Rate - Death Rate.

10. What is the primary function of the enzyme telomerase?

A DNA replication

B Telomere extension

C DNA damage repair

D RNA synthesis

Solution

- The primary function of the enzyme telomerase is to extend telomeres, which are repetitive nucleotide sequences at the ends of eukaryotic chromosomes.
- Telomeres protect chromosomes from degradation and fusion with other chromosomes, ensuring the stability of genetic information.
- Telomerase adds specific DNA sequence repeats ("TTAGGG" in humans) to the 3' end of telomeres, compensating for the shortening that occurs during DNA replication.

11. What is the main objective of implementing a Uniform Civil Code in India?

- A** To establish a single criminal framework
- B** To unify direct and indirect taxes
- C** To provide uniform personal laws for all citizens
- D** To standardize state-level administration

Solution

- Article 44, part of the Directive Principles of State Policy (DPSP), states that the State shall endeavor to secure for citizens a Uniform Civil Code throughout the territory of India.
- It is not enforceable by law but serves as a guide for the government to implement progressive reforms in personal laws for citizens.
- UCC is expected to establish uniformity in legal frameworks and eliminate religious-based disparities in personal laws.
- It promotes gender equality by removing discriminatory practices against women in matters of inheritance, divorce, and marriage.

12. Read the below statements marked as Assertion (A) and Reason (R).
Mark the correct option:

Assertion (A): The India Industrial Land Bank offers GIS-based industrial data.

Reason (R): The platform is operated by the Ministry of Mines.

A Both A and R are true, and R is the correct explanation of A

B Both A and R are true, but R is not the correct explanation of A

C A is true, but R is false

D A is false, but R is true

Solution

- The India Industrial Land Bank (IILB) is a platform developed to provide a centralized database of industrial areas across India. It utilizes GIS (Geographic Information System) technology to map industrial parks and zones, offering detailed information like location, area, facilities, and availability of land.
- GIS-based tools help potential investors and businesses access real-time data on industrial land availability, making the decision-making process more efficient.

- The India Industrial Land Bank is not operated by the Ministry of Mines. It is managed under the Department for Promotion of Industry and Internal Trade (DPIIT), which functions under the Ministry of Commerce and Industry.
- The Ministry of Mines primarily oversees matters related to mining and mineral resources in India, and it does not directly manage platforms like the IILB.

13. Consider the following statements regarding atmospheric layers:

1. Most weather conditions occur in the stratosphere.

2. The ozone layer is primarily located in the troposphere.

Which of the statements given above is/are correct?

A Statement 1 only

B Statement 2 only

C Both 1 and 2

D Neither 1 nor 2

Solution

- The majority of weather phenomena such as rain, thunderstorms, and clouds occur in the troposphere, which is the lowest layer of Earth's atmosphere.
- The stratosphere, lying above the troposphere, is characterized by stable air and minimal turbulence, making it unsuitable for weather activities.
- As weather conditions do not occur in the stratosphere, this statement is incorrect.
- The ozone layer is predominantly found in the stratosphere, specifically between 15–35 kilometers above the Earth's surface.

- This region, known as the ozonosphere, plays a critical role in absorbing harmful ultraviolet (UV) radiation from the Sun.
- Since, the ozone layer is not located in the troposphere, this statement is incorrect.

14. In Bhakti traditions, which two broad types of worship are mentioned?

A Vedic and Non-Vedic

B Saguna and Nirguna

C Orthodox and Reformist

D Shaiva and Vaishnava

Solution

- The Bhakti movement in India emphasized devotion to a personal deity and was categorized into two main traditions: Saguna and Nirguna.
- Saguna Bhakti refers to devotion to a deity with form and attributes, such as Lord Krishna, Rama, or Goddess Durga.
- Nirguna Bhakti focuses on the worship of a formless, infinite, and abstract divine reality, often associated with concepts like the ultimate truth or Brahman.
- Famous saints like Meera Bai, Tulsidas, and Surdas were proponents of Saguna Bhakti, while Kabir and Guru Nanak emphasized Nirguna Bhakti.

15. In the following question, select the related word from the given alternatives

Jurisprudence : Law :: Epistemology : ?

A Reality

B Logic

C Knowledge

D Ethics

Solution

- Jurisprudence is the study or philosophy of Law.
- Similarly, Epistemology : ?

Epistemology is the study or philosophy of Knowledge.

- Hence, the correct answer is 'Option C'.

16. How many letters in "SIGNATURE" are between the first vowel and the last consonant?

A 3

B 6

C 5

D 4

Solution

- Let's check the letters between the first vowel and the last consonant in "SIGNATURE":

First vowel = I → 2nd letter

Last consonant = R → 8th letter

- Now, the letters between them are:

G (3rd), N (4th), A (5th), T (6th), U (7th) → Total 5 letters

17. Select the letter-cluster from among the given options that can replace the question mark (?) in the following series.

MNK, NOJ, OPI, PQH, ?

A GFD

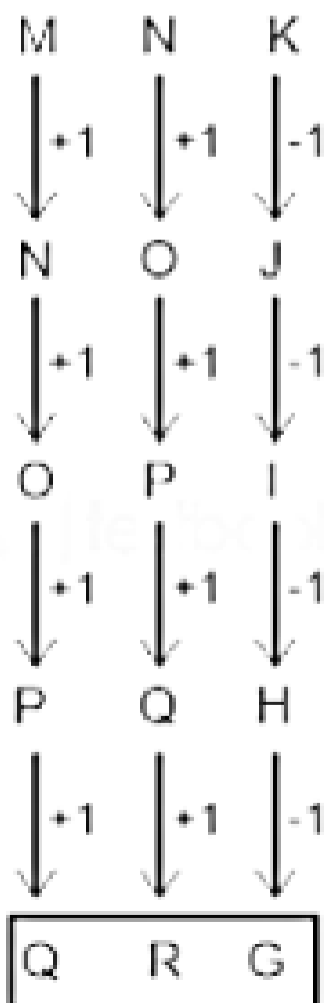
B HJG

C QRG

D IJH

Solution

- The logic followed here is:



- So, 'QRG' will replace the question mark in the given series.

18. Select the letter-cluster from among the given options that can replace the question mark (?) in the following series.

QAZ, SDF, UGL, ?

A VIJ

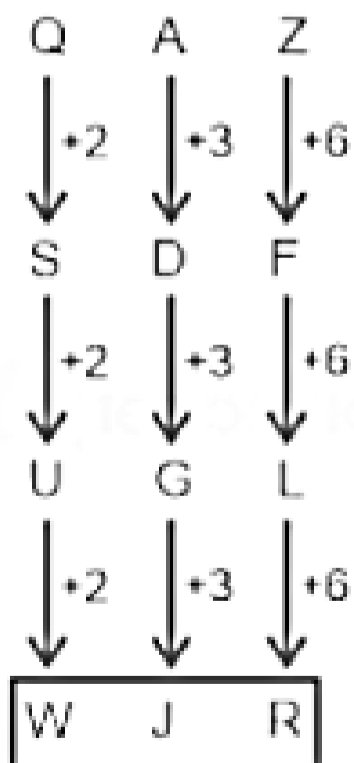
B TFG

C TGH

D WJR

Solution

- The logic followed here is:



- So, 'WJR' will replace the question mark in the given series.

19. Which of the following alternatives will replace the question mark?

Chaos, Conflict, Negotiation, Resolution, ?

A Justice

B Harmony

C Stability

D Law

Solution

- Given sequence:

Chaos → Conflict → Negotiation → Resolution → ?

- Let's understand the flow:

Chaos – Disorder

Conflict – Open disagreement

Negotiation – Attempt to solve the conflict

Resolution – Conflict is solved

- Thus, the natural outcome is peace and balance.

Now, checking the given options:

- Option A) Justice

Justice – may or may not follow

- Option B) Harmony

Harmony – state of peace after resolution

- Option C) Stability

Stability – possible but broader term

- Option D) Law

Law – not directly part of the sequence.

- Here, The most logical continuation is Harmony.

20. Which word does not belong to the category?

A Hibiscus

B Tulip

C Apple

D Daisy

Solution

- Given:

Hibiscus – a flower

Tulip – a flower

Apple – a fruit

Daisy – a flower

- Hibiscus, Tulip, and Daisy are flowers, while Apple is a fruit.

21. What comes next:

0, 6, 24, 60, 120, ?

A 196

B 200

C 210

D 156

Solution

- The logic followed here is:



- Thus, "210" will replace the question mark in the given series.

22. What should come at the place of question mark?

3, 4, 13, 14, 45, 46, ?

A 143

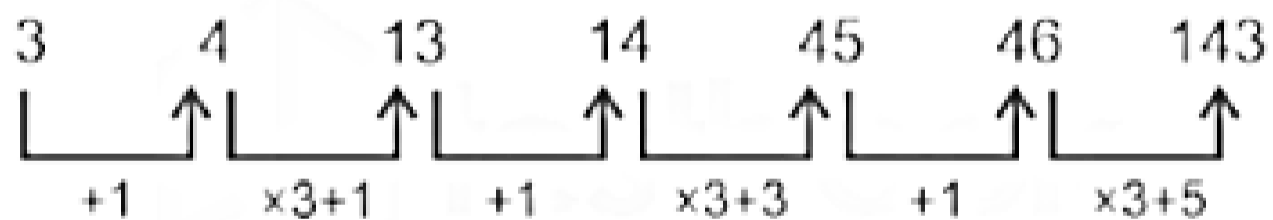
B 138

C 140

D 136

Solution

- The logic followed here is:



- Thus, "143" will replace the question mark in the given series.

23. Read the following statement carefully and identify the conclusion that follows.

Statement:

No student of Class X failed the science exam this year.

Conclusions:

I. The science exam was very easy.

II. All students of Class X passed science.

A Only Conclusion I follows

B Only Conclusion II follows

C Both I and II follow

D Neither I nor II follows

Solution

Conclusions:

- I. The science exam was very easy - False (Even if no one failed, it doesn't prove the exam was easy. Students might have prepared well, or grading may have been lenient.).

- II. All students of Class X passed science - True (If no student failed, it logically means all students passed.).
- So, Only Conclusion II follows.

24. Instruction: Identify the assumptions that must hold for the statement to be valid, then choose the correct option.

Statement: Although recent advancements in quantum computing have significantly improved processing speeds, the stability of quantum states remains a critical barrier to developing large-scale quantum computers for practical applications.

Assumptions:

I. Quantum computing holds the potential for faster data processing than classical computing.

II. Quantum states are inherently unstable, making large-scale quantum computing unfeasible.

III. Recent advancements in quantum computing have resolved the issue of quantum state stability.

A Only I and II are implicit

B Only II and III are implicit

C Only I is implicit

D All I, II, and III are implicit

Solution

Assumptions:

- I. Quantum computing holds the potential for faster data processing than classical computing - Implicit (The statement talks about improved processing speeds, which assumes quantum computing offers high-speed potential.)
- II. Quantum states are inherently unstable, making large-scale quantum computing unfeasible- Not Implicit (The statement says stability is a critical barrier, not that large-scale quantum computing is completely unfeasible. It suggests difficulty, not impossibility.)
- III. Recent advancements in quantum computing have resolved the issue of quantum state stability- Not Implicit (In fact, the statement clearly says stability remains a critical barrier, meaning it has NOT been resolved.)
- Here, Only I is implicit.

25. Each of the letters in the word **GARDEN** is arranged in alphabetical order. How many letters are there in the English alphabetical series between the letter that is fifth from the left and the one that is third from the right in the new letter-cluster formed?

A Two

B One

C Six

D Four

Solution

- Given Word: GARDEN
- Letters: G, A, R, D, E, N
- Alphabetical order: A, D, E, G, N, R
- New letter cluster: A D E G N R
- Thus, Fifth from the left → N
- Third from the right → G
- Here, Alphabetical order: G, H, I, J, K, L, M, N
- Letters between G and N: H, I, J, K, L, M

- So, Total letters = 6

26. How many meaningful four-letter English words can be formed using the first, second, fourth, and fifth letters of the word "ELEVATE" (when counted from left to right), using each letter only once in each word?

A 1

B 2

C 3

D 4

Solution

- Given Word: "ELEVATE"

1st letter → E

2nd letter → L

4th letter → V

5th letter → A

- So, the letters are: E, L, V, A
- Thus, Possible meaningful words:

VEAL

VALE

LAVE

- All three are valid English words.
- Therefore, total meaningful four-letter words = 3

27. Which of the following is/are identical to the address given:

Rajesh Verma 15B, Sapphire Towers, Jaipur, 302018

1. Rajesh Verma 15B, Sapphire Towers, Jaipur, 302018
2. Rajesh Verma 15B, Sapphire Towers, Jaipur, 302019
3. Rajesh Verma 15B, Sapphire Tower, Jaipur, 302018
4. Rajesh Verma 15B, Sapphire Towers, Jaipur, 302017

A 1 Only

B 3 Only

C 2 Only

D 4 Only

Solution

- A. Rajesh Verma 15B, Sapphire Towers, Jaipur, 302018 ⇒ Exactly the same.
- B. Rajesh Verma 15B, Sapphire Towers, Jaipur, 302019 ⇒ PIN code is different (302019 instead of 302018).
- C. Rajesh Verma 15B, Sapphire Tower, Jaipur, 302018 ⇒ "Tower" is singular instead of "Towers".

- D. Rajesh Verma 15B, Sapphire Towers, Jaipur, 302017 ⇒ PIN code is different (302017 instead of 302018).

28. Find the option that best completes the analogy.

EK :: MS :: FP : ?

A ND

B NL

C NX

D NT

Solution

- The logic followed here is: Alphabet position + 8

- Similarly, FP : ?

$$F + 8 = N$$

$$P + 8 = X$$

- Hence, the correct answer is "Option C".

29. In each of the following questions, the second word is formed by rearranging the letters of the first word according to a specific pattern. Apply the same pattern to the third word to determine the correct answer from the given alternatives.

NUMBER : UNBMRE :: GHOSTS : ?

A HGOSTS

B HOGSTS

C HGSOST

D HGSOTS

Solution

- NUMBER Positions:

1	2	3	4	5	6
N	U	M	B	E	R

- Rearranged as: 2 1 4 3 6 5 \Rightarrow U N B M R E
- Similarly, GHOSTS : ?

GHOSTS Positions:

1	2	3	4	5	6
G	H	O	S	T	S

- Rearranged as: 2 1 4 3 6 5 \Rightarrow H G S O S T

30. Introducing a boy, a girl said, "He is the son of my mother's only son." Who is the boy to the girl?

A Brother

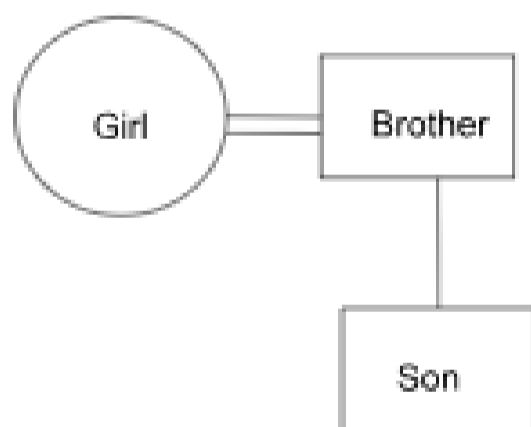
B Cousin

C Nephew

D Son

Solution

- Family tree:



- So, Brother's son = Nephew.

31. **One number doesn't match this factorial series:**

2, 6, 24, 120, 720, 1000

A 6

B 120

C 1000

D 24

Solution

- These numbers look like factorials:

$$2 = 2!$$

$$6 = 3!$$

$$24 = 4!$$

$$120 = 5!$$

$$720 = 6!$$

- So, Next should be: $7! = 5040$
- Thus, Instead of 5040, the series has 1000, which is not a factorial number.

32. Which number set is different?

(11, 22, 44), (13, 26, 52), (15, 30, 60), (14, 28, 43)

A (11, 22, 44)

B (13, 26, 52)

C (15, 30, 60)

D (14, 28, 43)

Solution

- Logic: In the first three sets, each number is double the previous number.
- Option D) (14, 28, 43)
 $\Rightarrow 14 \times 2 = 28$
 $28 \times 2 = 56$ (But given 43)
- Hence, the correct option is "Option D".

33. If $5 \# 3 = 19$ and $7 \# 2 = 17$, what is $9 \# 1$?

A 12

B 11

C 8

D 10

Solution

- Logic: Extra number decreasing by 1 as first number increases by 2.

- If $5 \# 3 = 19$,

$$\Rightarrow 5 \# 3 = 5 \times 3 + 4 \text{ and } 7 \# 2 = 17$$

$$\Rightarrow 7 \# 2 = 7 \times 2 + 3$$

- Similarly, $9 \# 1$?

$$\Rightarrow 9 \# 1 = 9 \times 1 + 2$$

$$= 9 + 2$$

$$= 11$$

34. A 60 L mixture has a milk-water ratio of 7 : 3. How much water to add to make the ratio 1 : 1?

A 18 L

B 24 L

C 22 L

D 20 L

Solution

- Find total parts: $7 + 3 = 10$ parts
- Find quantity of milk:

$$\text{Milk} = \left(\frac{7}{10}\right) \times 60$$

$$\text{Milk} = 42 \text{ L}$$

- Find quantity of water:

$$\text{Water} = \left(\frac{3}{10}\right) \times 60$$

$$\text{Water} = 18 \text{ L}$$

- For ratio 1 : 1

$$\text{Milk} = \text{Water}$$

- Milk is already 42 L, so water must also be 42 L.
- Water to be added = $42 - 18 = 24$ L

35. Pointing to a girl, Aryan said, "She is the daughter of the only child of my grandmother." How is the girl related to Aryan?

A Niece

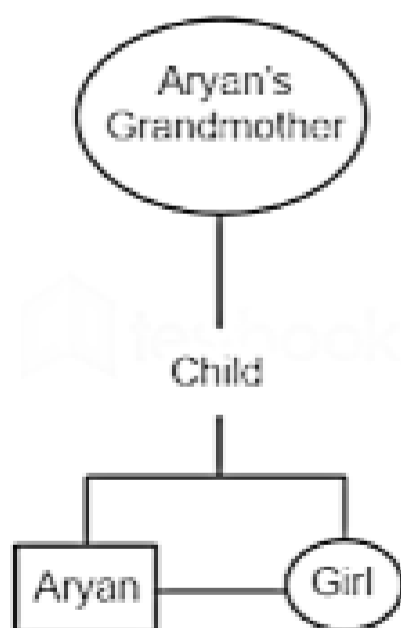
B Aunt

C Sister

D Cousin

Solution

- Family tree:



- Therefore, the girl is Aryan's Sister.

36. Ramesh says, "The boy playing football is the younger of the two sons of my father's wife." How is the boy related to Ramesh?

A Brother

B Nephew

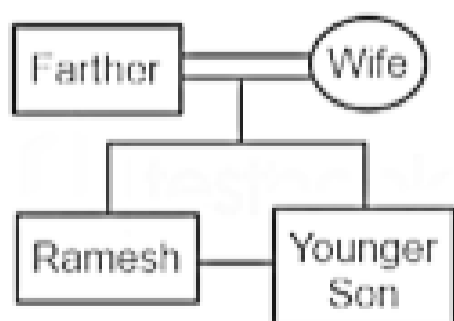
C Cousin

D Stepbrother

Solution

Given:

- My father's wife → This is Ramesh's mother.
- The two sons of my father's wife → This means Ramesh and his brother, because both are sons of the same mother.
- The boy is the younger of the two sons → So the boy must be Ramesh's younger brother.



- So, the football-playing boy is Ramesh's brother.

37. If $\frac{11}{19} = A$ and $\frac{2}{9} = B$, then what is $A - B$?

A 0.36

B 0.6

C 0.76

D 0.56

Solution

- Formula Used: $\frac{a}{b} - \frac{c}{d} = \frac{ad-bc}{bd}$

- Here,

$$A - B = \frac{11}{19} - \frac{2}{9}$$

- Take LCM of 19 and 9:

$$19 \times 9 = 171$$

- Now convert into like fractions:

$$(11 \times 9 - 2 \times 19) \div 171$$

$$= (99 - 38) \div 171$$

$$= \frac{61}{171}$$

- Now convert to decimal:

$$61 \div 171 \approx 0.356 \approx 0.36$$

38. If the sum of 35 and 46 is multiplied by 2, what is the result?

A 158

B 164

C 162

D 160

Solution

- Find the sum of 35 and 46:

$$35 + 46 = 81$$

- Multiply the sum by 2:

$$81 \times 2 = 162$$

- So, the result is 162.

39. Which of the following best describes Annamacharya's contribution to Indian devotional music?

A Composed Sanskrit hymns on caste rituals

B Focused only on melody, not on social reform

C Restricted songs to temples and priests only

D Wrote over 32,000 songs promoting devotion and equality

Solution

- Annamacharya, also known as Tallapaka Annamacharya, was a 15th-century saint and composer hailed as the “Padakavita Pitamaha” (Grandfather of Telugu Songwriting).
- He composed over 32,000 devotional songs (kritis) dedicated primarily to Lord Venkateswara of Tirumala, many of which promote the values of devotion, equality, and social harmony.
- His works were composed in Telugu and Sanskrit, making him one of the earliest composers in Indian music to use vernacular languages for devotional expression.
- He strongly believed in the principle of equality and opposed the caste-based discrimination prevalent during his time, which is often reflected in his compositions.

- Annamacharya's compositions are not only devotional in nature but also convey profound spiritual and social messages, emphasizing bhakti (devotion) and the importance of human values.

40. **Why can hockey players use only the flat, left-hand side of the stick?**

A Better control and reduced injury risk

B Mandated right-hand play for training ease

C Prevents uneven bounce, ensures uniform rebound

D Prevents unfair left-handed advantage

Solution

- Hockey sticks are designed with a flat left-hand side to ensure uniform rebound and control of the ball during gameplay.
- The flat side prevents uneven bounce, which could occur if the stick had varying surfaces, ensuring consistency in ball handling.
- This uniformity is critical for fair play as it standardizes the performance of all players, regardless of their stick's orientation.
- Using only the flat side helps maintain the game's tempo and predictability, as the ball behaves consistently upon contact.
- Regulations by the International Hockey Federation (FIH) mandate that players use only the left-hand flat side of the stick, ensuring uniformity in gameplay across all levels of hockey.

41. **What change did the Regulating Act bring to the post of the Governor of Bengal?**

A He was required to report directly to the British Crown.

B He was reduced to a ceremonial position.

C **His role was elevated to Governor-General with a council of four members.**

D He was transferred to the Madras Presidency.

Solution

- The Regulating Act of 1773 was enacted by the British Parliament to address the administrative and financial issues of the East India Company in India.
- Under this Act, the Governor of Bengal was elevated to the position of Governor-General of Bengal.
- A council of four members was established to assist the Governor-General in decision-making, marking the beginning of centralized administration in India.
- Warren Hastings became the first Governor-General of Bengal under the provisions of this Act.
- The Act also brought the presidencies of Bombay and Madras under the control of the Governor-General of Bengal in matters of war and

diplomacy.

42. Suppose $x = \sqrt{2} + \sqrt{3}$, $y = \sqrt{5} + \sqrt{1}$, and $z = 2\sqrt{2} + 1$. ; then which of the following is true?

A $x < y < z$

B $z < y < x$

C $y < x < z$

D $x < z < y$

Solution

- Substitute approximate decimal values: $\sqrt{2} \approx 1.414$, $\sqrt{3} \approx 1.732$, $\sqrt{5} \approx 2.236$
 $\Rightarrow x \approx 1.414 + 1.732 = 3.146$
 $\Rightarrow y \approx 2.236 + 1 = 3.236$
 $\Rightarrow z \approx 2 \times 1.414 + 1 = 3.828$
- Comparing values: $3.146 < 3.236 < 3.828 \Rightarrow x < y < z$.

43. The budget for a construction project is allocated to land acquisition, building materials, and labor in the ratio 5 : 3 : 2. During the project, the cost of land acquisition rose by 5%, building materials rose by 10%, and labor fell by 20%. What is the percent change (increase or decrease) in the total project cost?

A 1.0% increase

B 1.5% decrease

C 1.5% increase

D 2.0% decrease

Solution

- Net percentage change can be calculated directly using the weighted average of the given ratios.
- Net % Change = $[(\text{Ratio1} \times \%1) + (\text{Ratio2} \times \%2) + (\text{Ratio3} \times \%3)] \div \text{Total Ratio parts}$
- Net % Change = $[5 \times 5 + 3 \times 10 + 2 \times (-20)] \div (5 + 3 + 2)$
- Net % Change = $(25 + 30 - 40) \div 10 = 15 \div 10$
- Net % Change = +1.5% (A positive value denotes an increase).

44. Evaluate:

$$6 - \left[\frac{2}{3} \div \left\{ \frac{1}{6} + \left(\frac{1}{2} \times \left(1 - \frac{1}{3} \right) \right) \right\} \right]$$

A $\frac{14}{3}$

B $\frac{15}{3}$

C $\frac{16}{3}$

D $\frac{17}{3}$

Solution

- According to BODMAS, solve inner brackets first: $\left(1 - \frac{1}{3} \right) = \frac{2}{3}$
- Multiply inner terms: $\frac{1}{2} \times \frac{2}{3} = \frac{1}{3}$
- Solve curly brackets: $\frac{1}{6} + \frac{1}{3} = \frac{1}{2}$
- Solve square brackets: $\frac{2}{3} \div \frac{1}{2} = \frac{2}{3} \times 2 = \frac{4}{3}$
- Final subtraction: $6 - \frac{4}{3} = \frac{14}{3}$.

45. X, Y, and Z invested ₹25,000, ₹35,000, and ₹40,000 respectively in a business. If the profit at the end of the year was ₹30,000, find Y's share.

A ₹10,500

B ₹10,000

C ₹11,000

D ₹11,500

Solution

- Since the time period is identical for all, the profit ratio equals the investment ratio.
- Investment Ratio of X : Y : Z = 25000 : 35000 : 40000 = 5 : 7 : 8
- Total profit parts = 5 + 7 + 8 = 20 parts
- Y's share = $(7 \div 20) \times 30000 = 7 \times 1500 = 10500$.

46. A and B started a business by investing ₹48,000 and ₹72,000 respectively. After 6 months, A withdrew half of his capital, while B increased his capital by ₹24,000. At the end of the year, they earned a total profit of ₹55,000. What is B's share in the profit?

A ₹26,500

B ₹28,000

C ₹38,500

D ₹36,000

Solution

- Ratio of Profit = $(Capital_A \times Time_A) : (Capital_B \times Time_B)$
- Profit Ratio = $[(48 \times 6) + (24 \times 6)] : [(72 \times 6) + (96 \times 6)]$
- Profit Ratio = $[6 \times (48 + 24)] : [6 \times (72 + 96)] = 72 : 168 = 3 : 7$
- B's share = $(7 \div 10) \times 55000 = ₹38,500$

47. Table – Daily Wages of 5 Workers Over 4 Days

Days	A	B	C	D	E
Day 1	200	180	220	160	190
Day 2	210	175	230	170	195
Day 3	190	185	215	180	200
Day 4	220	190	225	175	205

Q: What is the average daily earning of Worker C?

A 222.5

B 222

C 227.5

D 215

Solution

- Using the deviation method to find the average easily.
- Let the assumed average be 220.
- Deviations of Worker C's daily wages (220, 230, 215, 225) from 220 are: 0, +10, -5, +5.
- Net deviation = $0 + 10 - 5 + 5 = +10$

- Average deviation = $+10 \div 4 = +2.5$
- Actual average = $220 + 2.5 = 222.5$

48. In a city, the current number of literate people is 25,000. If the number of literate males decreases by 5% and the number of literate females increases by 10%, the total literate population becomes 25,250. What is the present number of literate males in the city?

A 12,500

B 14,000

C 15,000

D 16,500

Solution

- Net increase in population = $25250 - 25000 = 250$.
- Overall percentage change = $(250 \div 25000) \times 100 = +1\%$.
- Using the Alligation method on the percentage change of Males (-5%) and Females ($+10\%$):
- Ratio of Males to Females = $(10 - 1) : (1 - (-5)) = 9 : 6 = 3 : 2$.
- Present number of literate males = $(3 \div 5) \times 25000 = 15000$.

49. A baker ordered 10 kg of premium flour and some additional kg of standard flour. The price of premium flour per kg was twice that of the standard flour. Due to an ordering error, the quantities of the two types of flour were interchanged. This decreased the total cost by 25%. Find the ratio of the quantity of premium flour to standard flour in the original order.

A 1:2

B 5:2

C 3:4

D 4:5

Solution

- Let the price of standard flour = ₹1/kg and premium flour = ₹2/kg.
- Original cost = $10 \times 2 + x \times 1 = 20 + x$
- New cost = $x \times 2 + 10 \times 1 = 2x + 10$
- As cost decreased by 25%, New Cost = 75% of Original Cost $\Rightarrow \frac{3}{4}$

$$\Rightarrow \frac{(2x+10)}{(20+x)} = \frac{3}{4} \Rightarrow 8x + 40 = 60 + 3x \Rightarrow 5x = 20 \Rightarrow x = 4 \text{ kg.}$$

50. A vendor sold 15 toys for ₹3000 and gained a profit of 25%. How many toys should he sell for ₹2816 to make a profit of 10%?

A 15

B 16

C 17

D 18

Solution

- Using the combined ratio method: $\text{Amount1} \div (\text{Quantity1} \times \text{SP1}\%) = \text{Amount2} \div (\text{Quantity2} \times \text{SP2}\%)$
 $\Rightarrow 3000 \div (15 \times 125\%) = 2816 \div (N \times 110\%)$
 $\Rightarrow 200 \div 125 = 2816 \div 110N$
 $\Rightarrow 8 \div 5 = 25.6 \div N \Rightarrow N = 25.6 \times 5 \div 8 = 16.$

51. A trader sells one brand of tea at ₹150 per kg, incurring a 25% loss. He also sells another brand of tea at ₹200 per kg, incurring a 20% loss. If he mixes the two brands in equal proportions and sells the mixture at ₹175 per kg, what is his overall profit or loss percentage?

A Loss of 22.22%

B Profit of 22.22%

C Loss of 25%

D Profit of 25%

Solution

- CP of Brand A = $150 \times \left(\frac{100}{75}\right) = ₹200/\text{kg}$
- CP of Brand B = $200 \times \left(\frac{100}{80}\right) = ₹250/\text{kg}$
- For an equal mixture (1 kg each), Total CP = $200 + 250 = ₹450$
- Total SP for 2 kg = $175 \times 2 = ₹350$
- Loss % = $((450 - 350) \div 450) \times 100 = (100 \div 450) \times 100 = 22.22\%$.

52. A and B together can complete a work in 12 days. B and C together can complete the same work in 15 days. C and A together can do it in 20 days. In how many days can A alone complete the job?

A 30 days

B 20 days

C 50 days

D 15 days

Solution

- Total work = LCM of 12, 15 and 20 = 60 units.
- Combined efficiencies: $(A + B) = 60 \div 12 = 5$, $(B + C) = 60 \div 15 = 4$, $(C + A) = 60 \div 20 = 3$.
- Total efficiency of $2(A + B + C) = 5 + 4 + 3 = 12 \Rightarrow$ Efficiency of $(A + B + C) = 6$.
- Efficiency of A = Total Efficiency – Efficiency of $(B + C) = 6 - 4 = 2$ units/day.
- Time taken by A alone = Total work \div Efficiency of A = $60 \div 2 = 30$ days.

53. From a 64-liter container of pure spirit, 8 liters are removed and replaced by water. This operation is performed a total of three times. What is the final quantity of spirit remaining in the container?

A 34.34 liters

B 36.45 liters

C 38.62 liters

D 42.88 liters

Solution

- Direct Replacement Formula: Remaining Spirit = Initial Quantity \times $(1 - \text{Replaced Quantity} \div \text{Initial Quantity})^n$
- Remaining Quantity = $64 \times (1 - \frac{8}{64})^3 = 42.875 \approx 42.88$ liters.

54. A juice vendor mixes water with pure orange juice. If he sells the mixture at the cost price of pure orange juice and makes a profit of 20%, what is the ratio of water to pure orange juice in the mixture, respectively?

A 1 : 4

B 1 : 5

C 4 : 1

D 5 : 1

Solution

- When a mixture is sold at the cost price of the pure liquid, the profit earned is entirely due to the free liquid (water) added.
- Ratio of Water : Pure Liquid = Profit % : 100%
- Ratio of Water : Pure Orange Juice = 20 : 100
- Ratio of Water : Pure Orange Juice = 1 : 5.

55. A car covers 40% of a certain distance at a pace of 20 km/h and the remaining distance at a pace of 30 km/h. What is the average speed of the car for the entire journey?

A 24 km/h

B 25 km/h

C 26 km/h

D 27 km/h

Solution

- Let the total distance be assumed as 100 km.
- First part of the distance = 40 km, covered at 20 km/h.
- Time taken = $40 \div 20 = 2$ hours.
- Remaining distance = 60 km, covered at 30 km/h.
- Time taken = $60 \div 30 = 2$ hours.
- Average Speed = Total Distance \div Total Time = $100 \div (2 + 2) = 25$ km/h.

56. A and B are jogging around a park's circular track which has a perimeter of 1.2 km. They start from the same point at 6:00 a.m. and run in opposite directions. A's speed is 5 km/h, and B's speed is 7 km/h. At what time will they meet for the fifth time?

A 6:25 AM

B 6:30 AM

C 6:45 AM

D 7:00 AM

Solution

- Relative speed (opposite directions) = $5 + 7 = 12$ km/h.
- Time for first meeting = Distance \div Relative speed = $1.2 \div 12 = 0.1$ hours = 6 minutes.
- Time for 5th meeting = $5 \times 6 = 30$ minutes.
- Meeting Time = 6:00 AM + 30 minutes = 6:30 AM.

57. What is the radian measure of 150° ?

A $\frac{5\pi}{6}$

B $\frac{2\pi}{3}$

C $\frac{3\pi}{4}$

D $\frac{\pi}{3}$

Solution

- To convert any angle from degrees to radians, multiply the degree value by $\frac{\pi}{180}$
- Radian measure = $150^\circ \times \left(\frac{\pi}{180}\right)$
 \Rightarrow Radian measure = $\frac{15\pi}{18}$
 \Rightarrow Radian measure = $\frac{5\pi}{6}$
- \therefore The correct answer is $\frac{5\pi}{6}$.

58. What is the area of a sector with a central angle of 120° and radius 8 cm?

A $\frac{64\pi}{3} \text{ cm}^2$

B $\frac{54\pi}{3} \text{ cm}^2$

C 48 cm^2

D 52 cm^2

Solution

- Since the central angle is 120° , the sector represents exactly $120^\circ \div 360^\circ = \frac{1}{3}$ of the full circle.
- Area of the full circle = $\pi \times r^2 = \pi \times 8^2 = 64\pi \text{ cm}^2$.
- Area of the sector = $\left(\frac{1}{3}\right) \times 64\pi = \frac{64\pi}{3} \text{ cm}^2$.

59. Which of these lines is parallel to $3x + 2y = 5$?

A $3x + 2y = 7$

B $2x + 3y = 5$

C $3x - 2y = 5$

D $x + y = 5$

Solution

- For any linear equation $ax + by = c$, all lines parallel to it are of the identical form $ax + by = k$ (where $k \neq c$).
- The given line is $3x + 2y = 5$.
- By comparing the options, only the equation $3x + 2y = 7$ matches this exact a and b coefficient format.

60. If $\sin(90^\circ - x) = \cos(2x)$, then what is x ?

A 0°

B 30°

C 25°

D 15°

Solution

- Using the identity $\sin(90^\circ - \theta) = \cos(\theta)$, we get $\cos(x) = \cos(2x)$.
- By comparing the angles directly for the principal value, we can write:

$$x = 2x \Rightarrow x = 0^\circ$$

- Checking the options, 0° satisfies the equation: $\sin(90^\circ) = \cos(0^\circ) \Rightarrow 1 = 1$.

61. If $x = \sqrt{5} + 2$, Find $x^2 - 4\sqrt{5}$.

A 1

B 7

C 9

D 3

Solution

- Given $x = \sqrt{5} + 2$
- Square both sides directly: $x^2 = 5 + 4 + 4\sqrt{5} = 9 + 4\sqrt{5}$
- We need to find the value of $x^2 - 4\sqrt{5}$
- Substitute x^2 : $9 + 4\sqrt{5} - 4\sqrt{5} = 9$.

62. In triangles ABC and XYZ , if the lengths of the sides are such that AB equals XY , BC equals YZ , and CA equals ZX , which congruence rule demonstrates that triangle ABC is congruent to triangle XYZ ?

A SSS

B SAS

C ASA

D AAS

Solution

- The congruence of triangles is determined by matching their corresponding sides and angles.
- Since the problem states that all three corresponding sides are exactly equal ($AB = XY$, $BC = YZ$, $CA = ZX$).
- This perfectly matches the defining condition for the Side-Side-Side (SSS) congruence rule.

63. Given, A and B are complementary angles, and $\sin A = \frac{3}{5}$, what is $\tan B$?

A $\frac{4}{3}$

B $\frac{3}{4}$

C $\frac{5}{4}$

D $\frac{5}{3}$

Solution

- A and B are complementary angles $\Rightarrow A + B = 90^\circ \Rightarrow B = 90^\circ - A$
- $\tan B = \tan(90^\circ - A) = \cot A$
- Given $\sin A = \frac{3}{5} = \frac{\text{Perpendicular}}{\text{Hypotenuse}} \Rightarrow \text{Base} = \sqrt{(5^2 - 3^2)} = 4$
- $\cot A = \frac{\text{Base}}{\text{Perpendicular}} = \frac{4}{3}$.

64. In a cyclic quadrilateral ABCD, if angle A is 100° , what is the measure of angle C?

A 100°

B 80°

C 90°

D 70°

Solution

- The sum of opposite angles in a cyclic quadrilateral is always 180° .
- Angle A and Angle C are opposite angles in the cyclic quadrilateral ABCD.

$$\angle C = 180^\circ - \angle A$$

$$\angle C = 180^\circ - 100^\circ = 80^\circ.$$

65. If $\sin^2 A - \cos^2 A = \frac{1}{4}$, find the value of $\cos^2 A$.

A $\frac{5}{8}$

B $\frac{3}{8}$

C $\frac{1}{2}$

D $\frac{1}{4}$

Solution

- Using the fundamental trigonometric identity: $\sin^2 A + \cos^2 A = 1$
- Subtract the given equation ($\sin^2 A - \cos^2 A = \frac{1}{4}$) from this identity:
- $(\sin^2 A + \cos^2 A) - (\sin^2 A - \cos^2 A) = 1 - \frac{1}{4}$
- $2\cos^2 A = \frac{3}{4}$
- $\cos^2 A = \frac{3}{8}$.

66. Which of the following statements correctly reflect India's recent(2024) economic diplomacy and domestic investment facilitation reforms?

1. The India-Uzbekistan BIT allows unconditional access to international arbitration without exhausting local remedies.
2. The National Infrastructure Readiness Index (NIRI) solely ranks Smart Cities and excludes private investment indicators.

A Only 1

B Only 2

C 1 and 2 Both are correct

D Neither 1 nor 2 is correct

Solution

- Statement 1: The India-Uzbekistan Bilateral Investment Treaty (BIT) does not allow unconditional access to international arbitration without exhausting local remedies. Most modern BITs, including India's revised BIT model, require the exhaustion of local remedies before arbitration.
- The revised Indian Model BIT (2016) emphasizes the protection of national interest and mandates that disputes be attempted to be

resolved in domestic courts before proceeding to international arbitration.

- Statement 2: The National Infrastructure Readiness Index (NIRI) does not solely rank Smart Cities, nor does it exclude private investment indicators. It is designed to evaluate the readiness and performance of infrastructure across various sectors, including private investment indicators as a key parameter.
- The NIRI evaluates infrastructure readiness across multiple categories, combining public and private sector contributions, and does not limit its scope to Smart Cities alone.

67. Which statement accurately represents the connection between 'Heart: A History' by Sandeep Jauhar and the Edgar Award for Best Novel?

A Nominated for Edgar Award for blending medical history and mystery

B Received Edgar Award for fictional cardiac surgery

C Non-fiction memoir, ineligible for Edgar Award

D Won Edgar Award as pioneering medical fiction

Solution

- 'Heart: A History' by Sandeep Jauhar is a non-fiction memoir that explores the historical and scientific journey of cardiology.
- The Edgar Award is primarily awarded to works in the genre of mystery, crime, and suspense fiction, making non-fiction works like 'Heart: A History' ineligible.
- The book chronicles the evolution of heart treatments and delves into personal and emotional experiences with heart diseases.
- As a memoir focused on medical history, science, and the personal reflections of the author, it does not align with the criteria for the Edgar Award.

68. In which type of geological formation are gorges most commonly developed?

A Soft sediment

B Volcanic ash

C Glacial till

D Hard rocks

Solution

- Gorges are deep valleys with steep, almost vertical walls, commonly formed by the erosive action of rivers over geological time.
- They are most commonly developed in hard rock formations because these rocks resist erosion better than softer materials, allowing the river to cut deep, narrow valleys rather than wide ones.
- Examples of hard rocks where gorges are formed include granite, basalt, and other igneous or metamorphic rocks.
- Famous gorges like the Grand Canyon in the USA and Kali Gandaki Gorge in Nepal were carved through hard rock formations by persistent river erosion.
- The steep walls of gorges are created as the hard rock resists weathering and collapsing, maintaining the narrow and deep profile of the valley.

69. **Who inaugurated India's first lithium-ion battery plant in Tirupati, Andhra Pradesh, in September 2022?**

A Prime Minister Narendra Modi

B Amit Shah, Union Home Minister

C Nirmala Sitharaman, Minister of Finance

D

Rajeev Chandrasekhar, Minister of State for Electronics and Information Technology

Solution

- India's first lithium-ion cell manufacturing plant was inaugurated in Tirupati, Andhra Pradesh, in September 2022.
- Rajeev Chandrasekhar, the Minister of State for Electronics and Information Technology, inaugurated this significant facility.
- The plant is part of India's push towards promoting self-reliance in the manufacturing of advanced energy storage systems and reducing dependency on imports.
- The facility was established by Munoth Industries Limited, marking a key milestone in India's journey toward building a local ecosystem for lithium-ion battery production.
- This project aligns with the government's Make in India initiative, aiming to bolster domestic manufacturing and support the clean

energy transition.

70. **Examine the following statements about the SSLV-D2 mission and select the correct option:**

Statement 1: SSLV-D2 inserted EOS-07, Janus-1, and AzaadiSAT-2 into a 450 km circular orbit utilizing a three-stage vehicle powered entirely by liquid propulsion.

Statement 2: The SSLV-D2 mission showcased rapid deployment capability with low turnaround time and limited ground infrastructure needs.

A Only Statement 1 is correct

B Only Statement 2 is correct

C 1 and 2 are correct

D Neither 1 nor 2 are correct

Solution

- The SSLV-D2 mission demonstrated rapid deployment capability, characterized by a reduced turnaround time and minimal ground infrastructure requirements.
- The mission is specifically designed for launching small satellites into low Earth orbit, catering to increasing demand in the satellite market.

- The SSLV (Small Satellite Launch Vehicle) is equipped with a three-stage propulsion system, featuring solid propulsion for the first two stages and a liquid propulsion system for the velocity trimming module (VTM).
- On February 10, 2023, SSLV-D2 successfully deployed EOS-07, Janus-1, and AzaadiSAT-2 into a 450 km circular orbit, marking a significant milestone in India's space program.
- The mission reinforces the Indian Space Research Organisation's (ISRO) capability to facilitate cost-effective, timely launches for small satellite payloads.

71. Which of the following commissions recommended the establishment of a Permanent Secretariat for the Inter-State Council to institutionalize Centre-State cooperation?

A Rajamannar Committee

B Venkatachelliah Commission

C Sarkaria Commission

D Punchhi Commission

Solution

- The Sarkaria Commission was established by the Government of India in June 1983 to review the Centre-State relations.
- It recommended the establishment of a Permanent Secretariat for the Inter-State Council to institutionalize Centre-State cooperation.
- The Inter-State Council is a constitutional body under Article 263 of the Indian Constitution to investigate and discuss subjects of common interest between the Union and States.
- The Sarkaria Commission emphasized the need for better communication and coordination between the Centre and States to strengthen federalism in India.
- Its recommendations led to the formation of the Inter-State Council in 1990, which serves as an important platform for resolving

disputes and promoting cooperative federalism.

72. **Why are cooking utensils often made with a copper bottom?**

- A** Copper is a good insulator, preventing heat loss.
- B** Copper has a low melting point, making it easy to manufacture.
- C** Copper is an good conductor of heat, ensuring even heating.
- D** Copper reacts readily with food, enhancing flavor.

Solution

- Copper is an excellent conductor of heat, meaning it allows heat to spread quickly and evenly across its surface.
- This property ensures uniform cooking, preventing hotspots that could cause unevenly cooked food.
- Copper's high thermal conductivity allows it to respond quickly to temperature changes, offering better control over cooking processes.
- Many cooking utensils have copper bottoms because it improves energy efficiency, reducing cooking time and saving fuel or electricity.
- Due to its efficient heat transfer, copper is commonly used in combination with other materials like stainless steel, which adds durability and prevents direct contact with food.

73. **The Agriculture Infrastructure Fund (AIF) provides support for?**

A Free fertilizers

B MGNREGA work

C Cash transfers

D Agri-logistics and cold chains

Solution

- The Agriculture Infrastructure Fund (AIF) is a financing facility launched by the Government of India in 2020 to strengthen agricultural infrastructure across the country.
- It provides medium to long-term debt financing for investment in viable projects for post-harvest management infrastructure and community farming assets.
- Key projects funded under the AIF include cold storage, warehousing, sorting & grading units, packhouses, ripening chambers, and other agri-logistics infrastructure.
- Through this initiative, farmers and Farmer Producer Organizations (FPOs) can access loans with interest subvention and credit guarantee support.
- The fund also aims to reduce post-harvest losses and improve the efficiency of agricultural supply chains, ensuring better price

realization for farmers.

74. **According to the Global Peace Index 2024, which of the following statements correctly reflects global peace trends since 2008?**

A All three GPI domains have steadily improved since 2008

B The average country score has improved by 4.5% since 2008

C **Ongoing Conflict and Safety & Security have deteriorated, while Militarisation has improved**

D The number of countries showing improvement exceeds those showing deterioration

Solution

- The Global Peace Index (GPI) measures the relative peacefulness of nations using three primary domains: Ongoing Conflict, Safety & Security, and Militarisation.
- Since 2008, there has been a deterioration in the domains of Ongoing Conflict and Safety & Security globally, primarily due to an increase in conflicts, violence, and political instability.
- However, the Militarisation domain has shown improvement, reflecting reduced military expenditure and fewer armed forces in some regions.
- Global peace has deteriorated over the years, with 2024 marking the continuation of this trend, driven by factors such as geopolitical

tensions, terrorism, and internal conflicts.

- The GPI provides a comprehensive overview of global trends in peace, helping policymakers address issues related to conflict and security.

75. Which of the following correctly highlights a unique feature of India's textile industry?

- A** It focuses only on raw material exports
- B** It is partially self-reliant and imports final products
- C** It is self-reliant across the full value chain
- D** It only caters to domestic markets

Solution

- India's textile industry is one of the most self-reliant sectors in the country, encompassing the entire value chain from raw materials to finished goods. This includes cotton production, spinning, weaving, dyeing, printing, and garment manufacturing.
- The Indian textile sector is among the largest globally, contributing approximately 2.3% to India's GDP, 7% to the industrial output, and 12% to the country's export earnings.
- India is the largest producer of cotton and jute globally and ranks second in silk and polyester production, ensuring a strong foundation for raw material availability.
- With a balanced integration of traditional handloom techniques and advanced machinery, the textile industry caters to both domestic and international markets.

- Government initiatives such as the Production Linked Incentive (PLI) Scheme for textiles and the establishment of Mega Textile Parks aim to further boost the self-reliance of the sector across the value chain.

76. Select the most appropriate synonym of the given word:

CAUSTIC

A Kind

B Mild

C Gentle

D Sarcastic

Solution

- The word "Caustic" means sarcastic in a scathing and bitter way, or capable of burning, corroding, or destroying organic tissue by chemical action.
- Example: Her caustic comments about his work left him feeling insulted.
- "Sarcastic" refers to using irony to mock or convey contempt.
- Example: He made a sarcastic remark about her punctuality, knowing she was always late.
- Hence, the word "caustic" aligns closely with "sarcastic" in terms of its meaning.

77. Choose the correct meaning of idiom:**Make no bones about it**

A To hesitate before speaking

B To remain neutral

C To be direct and honest

D To confuse the listener

Solution

- The idiom "Make no bones about it" means to be direct, clear, and honest about something without hesitation or ambiguity.
- Example: He made no bones about his dislike for the new policy and spoke openly against it.
- It is used when someone expresses their thoughts or opinions in a straightforward manner without sugar-coating their words.

78. Select the most appropriate antonym of the given word.

Evanescent

A Ephemeral

B Transient

C Enduring

D Fleeting

Solution

- The word "Evanescent" means something that is fleeting, vanishing, or lasting only for a very short time.
- Example: The evanescent beauty of a sunset leaves us in awe, even though it lasts only a few moments.
- "Enduring" refers to something that is lasting, permanent, or continuing over time despite challenges or changes.
- Example: His love for music is enduring, having lasted throughout his entire life.
- Hence, we can conclude that the opposite of 'Evanescent' is 'Enduring'.

79. Identify the misspelt word.

A Avaricious

B Temerarious

C Penitent

D Inadvertant

Solution

- The misspelled word is 'Inadvertant'.
- The correct spelling would be 'Inadvertent'.
- The word 'Inadvertent' is an adjective which means 'not resulting from or achieved through deliberate planning'.)
- For Example: An inadvertent administrative error caused confusion.
- Therefore, the correct answer is 'Inadvertant'.

80. Spot the correct spelling of an REE-bearing metamorphic texture word.

A Prophyroblastic

B Porphyroblastic

C Porfyrblastic

D Porphyroblastik

Solution

- The misspelled word is 'Prophyroblastic'.
- The correct spelling would be 'Porphyroblastic'.
- The word 'Porphyroblastic' refers to a metamorphic texture characterized by large crystals (called porphyroblasts) within a finer-grained matrix.
- Porphyroblasts are formed during the metamorphism of rocks and can include minerals like garnet, staurolite, or kyanite.
- Therefore, the correct answer would be 'Porphyroblastic'.

81. Choose the correct one-word substitute for: 'A political system based on the rule of the wealthy'.

A Oligarchy

B Aristocracy

C Plutocracy

D Meritocracy

Solution

- The word "Plutocracy" refers to a political system or society that is ruled or controlled by the wealthy.
- Example: Some critics argue that modern democracies are evolving into plutocracies where the rich have disproportionate influence over political decisions.
- "Plutocracy" is derived from the Greek words "ploutos" (wealth) and "kratos" (power), which signify "the rule of the wealthy."
- Oligarchy: A form of government in which power is held by a small group of people.
- Aristocracy: A form of government in which power is held by the nobility.
- Meritocracy: A system in which advancement is based on individual ability or achievement.

82. Select the correct option:

Only after a decade of fieldwork _____ fully grasp the dialect's nuances.

A she had

B did she

C had she

D she did

 ENTRI

Solution

- The correct structure for inversion in the sentence is "did she" because the sentence starts with "Only after" requiring the auxiliary verb to precede the subject.
- Option A ("she had") is incorrect because it does not follow the grammatical rule of inversion.
- Option C ("had she") is incorrect because it suggests past perfect tense, which does not fit the context.
- Option D ("she did") is incorrect because it does not follow the correct inversion structure.
- Complete Sentence: "Only after a decade of fieldwork did she fully grasp the dialect's nuances."

83. Select the correct option:

The professor's remarks were so dense with jargon that they bordered on _____.

A opacity

B opaque

C opacus

D opalescent

 ENTRI

Solution

- The term "opacity" refers to the quality of being difficult to understand or lacking clarity, which fits the context of the professor's jargon-heavy remarks.
- Option B (opaque) is an adjective, not a noun, and doesn't fit grammatically in the sentence.
- Option C (opacus) refers to a type of cloud and is irrelevant in this context.
- Option D (opalescent) means displaying iridescent colors, which is unrelated to the context of comprehension.
- Complete Sentence: "The professor's remarks were so dense with jargon that they bordered on opacity."

84. Select the correct option:

Her rebuttal, though eloquent, failed to _____ the central issue raised by the opposition.

A address

B digress

C circumvent

D elude

Solution

- The word "address" means to deal with or discuss a particular issue or topic.
- The sentence suggests that although the rebuttal was eloquent, it failed to directly deal with the central issue raised by the opposition.
- Options B, C, and D are incorrect as they imply deviating from or avoiding the issue, which is contrary to the intended meaning of the sentence.
- Complete Sentence: "Her rebuttal, though eloquent, failed to address the central issue raised by the opposition."

85. Find the part of the sentence that contains an error:

The reforms being recommended by the panel (1)/ are not only intended to streamline administrative functions (2)/ but also addressing the asymmetries in resource allocation (3)/ that have long plagued rural districts. (4)

A (1)

B (2)

C (3)

D (4)

Solution

- The error in the sentence is in part (3), where the phrase "but also addressing" is incorrect.
- The phrase should maintain parallelism with the earlier phrase "to streamline." Thus, "addressing" should be replaced with "to address."
- Parallel structure ensures grammatical consistency and improves readability.
- Therefore, the corrected phrase will be "but also to address the asymmetries in resource allocation."

86. Find the part of the sentence that contains an error:

What the committee failed to deliberate on adequately (1)/ were not the policy's objectives themselves, (2)/ but the political ramifications it (3)/ might have had if implemented without broader consensus. (4)

A (1)

B (2)

C (3)

D (4)

Solution

- The error lies in the phrase "were not the policy's objectives themselves" present in part 2 of the sentence.
- The verb "were" is incorrectly used as the subject "What the committee failed to deliberate on adequately" is singular and requires a singular verb.
- The correct verb should be "was" instead of "were."
- This ensures subject-verb agreement, which is essential for grammatical correctness.
- Correct Sentence: "What the committee failed to deliberate on adequately was not the policy's objectives themselves, but the

political ramifications it might have had if implemented without broader consensus."

87. **Change the following from active to passive:**

The laboratory will have double-checked the reagents by dawn.

A The reagents have been double-checked by the laboratory by dawn.

B **The reagents will have been double-checked by the laboratory by dawn.**

C The reagents will be double-checked by the laboratory by dawn.

D The reagents would have been double-checking by the laboratory by dawn.

Solution

- **Passive voice structure:** The object of the active voice sentence becomes the subject of the passive voice sentence.
- **In the active voice, the sentence is:** "The laboratory will have double-checked the reagents by dawn."
- **To convert to passive voice:** Place the object "the reagents" at the beginning.
- **Change the active verb form "will have double-checked" to "will have been double-checked" (future perfect passive).**
- **Add the preposition "by" followed by the original subject "the laboratory."**
- **Ensure the time phrase "by dawn" remains at the end of the sentence for clarity.**

- **Correct Sentence:** "The reagents will have been double-checked by the laboratory by dawn."

88. Select the sentence containing the homonym of the highlighted word:

The *fanon* rested on the Pope's shoulder during Mass.

- A** The theologian lectured on the fanon's origin in Rome.
- B** The tailor stitched the edge of the fanon carefully.
- C** The critic analyzed Fanon's theory of postcolonial identity.
- D** The cardinal wore the fanon over his chasuble.

Solution

- The word "fanon" in the context of the sentence refers to a liturgical vestment used in the Roman Catholic Church, worn by the Pope during Mass.
- Example: The Pope adjusted the fanon before beginning the Mass ceremony.
- The homonym of "fanon" is "Fanon," which refers to Frantz Fanon, a notable philosopher and revolutionary known for his work on postcolonial studies and identity.
- Example: The professor discussed Fanon's influence on postcolonial literature.

89. **Convert the sentence provided below from its passive voice structure to an active voice structure:**

Rare minerals are known to have been secretly extracted from the site by unauthorized workers before the inspection.

A Unauthorized workers extracted the rare minerals before inspection.

B The site was secretly mined before the inspection.

C
Unauthorized workers are known to have secretly extracted rare minerals before inspection.

D The minerals had been extracted prior to inspection.

Solution

- **Passive voice structure:** The object of the active voice sentence becomes the subject of the passive voice sentence.
- **Active voice structure:** The subject of the active voice sentence performs the action described.
- The sentence in the active voice is: "Unauthorized workers are known to have secretly extracted rare minerals before inspection."
- The active voice retains the clarity of the subject performing the action.

- **Correct Sentence: "Unauthorized workers are known to have secretly extracted rare minerals before inspection."**

90. Comprehension:

Read the following passage and answer the questions based on the passage:

For seventeen-year-old Meera, adolescence was not merely a phase of hormonal transitions and academic aspirations—it became an arena where perception and self-worth collided with insidious intensity. In a world saturated with curated digital aesthetics and algorithm-driven beauty hierarchies, Meera’s own reflection began to feel less like truth and more like betrayal. Every scroll through her social media feed deepened a gnawing dissonance: between her authentic self and the impossible silhouettes idolized online. This wasn’t mere teenage insecurity—it manifested as a systematic devaluation of her physical self. Gradually, she adopted punitive behaviors: food became conditional, mirrors became adversaries, and compliments transformed into cryptic reminders of inadequacy. The subtle descent into dysmorphia was neither loud nor linear. Academically capable and socially pleasant, Meera wore the mask of normalcy with precision. Yet beneath the practiced smiles was a quiet implosion. She began withdrawing emotionally, rationalizing her distress as vanity, and trivializing her worth. The turning point came not with drama, but with silence—a refusal to eat for days, which led to medical intervention. Therapeutic engagement introduced her to the concept of self-image distortion, and the emotional scaffolding required to rebuild her fractured sense of identity. Through sustained counseling, Meera disentangled societal impositions from intrinsic value. She began to internalize that beauty is not a monolith dictated by culture but a spectrum shaped by diversity, health, and self-compassion. Meera’s narrative is not a singular anomaly but a mirror to a larger epidemic—where teenagers battle unspoken wars behind flawless digital façades. Combating this requires more than awareness; it calls for critical media literacy, empathetic environments, and systemic redefinition of beauty norms that extend beyond superficial metrics.

A. **What does the phrase "gnawing dissonance" in the passage most likely refer to?**

A Her hunger due to skipped meals

B Conflict between her inner worth and online ideals

C Her disagreement with her teachers

D Her detachment from academic pressure

Solution

- In the context of the passage, this points to the conflict between her inner sense of self-worth and the unrealistic ideals promoted online.
- She may value herself for who she truly is, but constant exposure to curated images, success standards, or social expectations on digital platforms creates tension and self-doubt.
- This mismatch leads to emotional unease rather than a physical problem or an external disagreement.

B. How does the passage describe Meera's psychological decline?

A Abrupt and confrontational

B Erratic and attention-seeking

C Subtle and inwardly destructive

D Vocal and rebellious

Solution

- The passage describes Meera's psychological decline as subtle and inwardly destructive.
- Rather than showing sudden outbursts or open rebellion, Meera's struggles unfold quietly within her.
- Her emotions and self-perception gradually erode, indicating an internal breakdown that is not immediately visible to others.
- This slow, almost unnoticed deterioration highlights how psychological distress can deepen without dramatic external signs.

C. What concept helped Meera begin recovering emotionally?

A Narcissistic validation

B Self-image distortion

C Social withdrawal management

D Behavioral conditioning

Solution

- The passage suggests that Meera's emotional recovery begins when she recognizes and understands how her perception of herself had been negatively shaped by unrealistic online ideals.
- By identifying this self-image distortion, she becomes aware that her feelings of inadequacy were not reflections of her true worth but the result of constant comparison and internalized external standards.
- This realization helps her rebuild a healthier, more realistic sense of self, marking the starting point of her emotional recovery.

D. Which of the following best captures the central theme of the passage?

A The influence of peer pressure on teens

B Cosmetic beauty norms and fashion trends

C **Hidden psychological battles due to digital aesthetics**

D The necessity of academic counseling for teens

Solution

- The passage focuses on the internal, often unnoticed emotional struggles faced by individuals like Meera as a result of constant exposure to idealized images and standards on digital platforms.
- Rather than overt peer pressure or surface-level fashion trends, it highlights how digital aesthetics subtly shape self-worth, distort self-image, and lead to quiet psychological decline.

- The theme emphasizes the invisible mental conflicts that arise behind curated online appearances.

E. What is the tone of the author in the end of the paragraph?

A Dismissive and ironic

B Reflective and critical

C Optimistic and celebratory

D Detached and neutral

Solution

- By the end of the paragraph, the author looks back thoughtfully on Meera's experience while critically examining the broader impact of digital beauty standards on mental health.
- The tone is not dismissive or detached; instead, it combines reflection on her inner journey with a subtle critique of the societal and digital pressures that contributed to her psychological struggle.
- The correct answer is Reflective and critical.

91. Choose the most suitable option to replace the highlighted part of the sentence:

I suggested that he *goes to the doctor immediately*.

A go to doctor at once

B should goes to the doctor

C go to the doctor immediately

D should have go to the doctor

Solution

- The sentence is in the subjunctive mood, which is used to express suggestions, demands, or hypothetical situations.
- The correct structure for the subjunctive mood is "suggested that he go", where the base form of the verb "go" is used without adding "-s" or "-es" even for third-person singular subjects.
- Complete Sentence: "I suggested that he go to the doctor immediately."

92. Choose the most suitable option to replace the highlighted part of the sentence:

I am used *to get up early in the morning.*

A to get up early

B with getting up early

C to getting up early

D for getting up early

Solution

- The phrase "used to" is followed by a gerund (the -ing form of a verb).
- Therefore, "to getting up early" is the grammatically correct choice.
- Complete Sentence: "I am used to getting up early in the morning."

93. A sentence is provided in direct speech. From the four given options, choose the one that most accurately conveys the sentence in its corresponding indirect speech.

She said, "He doesn't listen to me."

A She said he don't listen to her.

B She said that he doesn't listened to her.

C She said that he didn't listen to her.

D She said that he didn't listened to her.

Solution

Direct to Indirect:

- The verb "doesn't" in the direct speech is converted to "didn't" to match the past tense as the reporting verb "said" is in the past tense.
- The pronoun "me" is changed to "her" to match the subject "She" in the reporting clause.

Conjugation:

- "Doesn't listen" is changed to "didn't listen" to maintain proper tense consistency in indirect speech.

Punctuation and Format:

- Quotation marks used in direct speech are removed in indirect speech.
- The conjunction "that" is used to connect the reporting clause and the reported speech.
- The sentence in indirect speech ends with a period.
- Correct Sentence: She said that he didn't listen to her.

94. A sentence is provided in indirect speech. From the four given options, choose the one that most accurately conveys the sentence in its corresponding direct speech.

The manager informed the employees that the deadline for submission had been extended by two days.

A

"You may submit the work two days later than planned," the manager informed.

B

"The deadline has been extended by two days," said the manager.

C

"We are extending the submission deadline by two days," the manager said.

D

"You must finish it within two extra days," the manager said.

Solution

Key Conversions:

- "The deadline for submission had been extended" becomes "The deadline has been extended"
- In direct speech, the past perfect tense ("had been extended") is changed to the present perfect tense ("has been extended") to reflect the immediacy of the direct statement.
- "By two days" remains "by two days".

- The time frame stays unchanged as it accurately conveys the information.

Reporting Verb:

- Indirect: "informed".
- Converted to: "said" in direct speech to reflect a neutral reporting tone.

Punctuation and Format:

- Direct speech is enclosed in quotation marks.
- Starts with a capital letter "The" and ends with a period ".".
- Reporting clause follows the quoted speech, starting with a lowercase letter after the comma.
- Correct Sentence: "The deadline has been extended by two days," said the manager.

95. Rearrange the following sentences to form a coherent paragraph:

1. These narratives often explore the ethical and social consequences of technological advancement, from artificial intelligence to genetic engineering.
2. Science fiction is a genre of speculative fiction that typically deals with imaginative concepts such as futuristic science and technology.
3. This makes it a powerful tool for social commentary and for anticipating future challenges and dilemmas.
4. While entertaining, the genre serves a purpose beyond mere escapism.

A 2, 4, 1, 3

B 1, 3, 2, 4

C 4, 1, 3, 2

D 2, 1, 4, 3

Solution

- The paragraph introduces the genre of science fiction and elaborates on its purpose and implications.

- Sentence 2 is the first sentence as it defines science fiction: "Science fiction is a genre of speculative fiction that typically deals with imaginative concepts such as futuristic science and technology."
- Sentence 4 follows as it explains the genre's purpose beyond entertainment: "While entertaining, the genre serves a purpose beyond mere escapism."
- Sentence 1 is next as it elaborates on the themes explored in science fiction: "These narratives often explore the ethical and social consequences of technological advancement, from artificial intelligence to genetic engineering."
- Sentence 3 is the last sentence as it concludes by emphasizing the genre's significance: "This makes it a powerful tool for social commentary and for anticipating future challenges and dilemmas."
- The correct sequence is 2, 4, 1, 3.

96. **Rearrange the following sentences to form a coherent paragraph:**

1. **This process ensures that the food we eat is safe and does not contain harmful bacteria or other contaminants.**
2. **Food processing is a series of methods used to transform raw ingredients into consumable products.**
3. **These methods can range from simple actions like cutting and grinding to more complex procedures such as pasteurization and fermentation.**
4. **Furthermore, it also helps to preserve food, extend its shelf life, and enhance its nutritional value.**

A 2, 3, 1, 4

B 4, 2, 1, 3

C 3, 1, 4, 2

D 1, 2, 3, 4

Solution

- The paragraph logically introduces the concept of food processing and its relevance in a coherent manner.
- Sentence 2 is the first sentence as it defines food processing: "Food processing is a series of methods used to transform raw ingredients

into consumable products."

- Sentence 3 follows as it elaborates on the various methods of food processing: "These methods can range from simple actions like cutting and grinding to more complex procedures such as pasteurization and fermentation."
- Sentence 1 is the third sentence as it explains the importance of food processing in ensuring food safety: "This process ensures that the food we eat is safe and does not contain harmful bacteria or other contaminants."
- Sentence 4 is the final sentence as it concludes with the benefits of food processing: "Furthermore, it also helps to preserve food, extend its shelf life, and enhance its nutritional value."
- The correct sequence is 2, 3, 1, 4.



[.https://www.entri.me](https://www.entri.me)



[.https://play.google.com/store/apps/details?id=me.entri.entri.me](https://play.google.com/store/apps/details?id=me.entri.entri.me)